

# NORTH LOUISIANA

MAJOR EMPLOYERS  
DIRECTORY  
2010 EDITION



**north louisiana**  
economic partnership



# Introduction

Thanks for your interest in North Louisiana. Our region includes fourteen parishes and is recognized as one of the most diverse and balanced economies of its size in the nation. North Louisiana always has been a strategic location. From its earliest days, the region has been a key place for commerce and westward expansion. Today, North Louisiana remains a strategically located, cost competitive business location that continues to attract capital investment and jobs from companies with ties around the globe.

The regional Major Employers Directory is a useful resource for exploring the breadth and scope of the region's vibrant economy. The Directory provides data on regional employers with 100 or more employees and breaks down that information in several useful ways.

The information presented represents the most reliable and current data available (as of December 31, 2008) for the fourteen parish region gathered from recognized and credible sources. The directory is the result of an ongoing partnership with the staff of the Center for Business and Economic Research (CBER) at Louisiana State University in Shreveport, [www.lsus.edu/cber](http://www.lsus.edu/cber), and the valued financial support of Louisiana Economic Development.

## About North Louisiana Economic Partnership (NLEP)

The North Louisiana Economic Partnership (NLEP) is a non-profit economic development marketing organization promoting North Louisiana as a desirable and profitable business location. The NLEP and its many partners work with both existing companies and prospective employers to encourage incremental capital investment and job creation as a way to build a strong and thriving economy.

The NLEP is the innovative result of a dialogue by leaders of two regional organizations with a vision and commitment to provide increased options and greater resources in support of companies considering expansion or location decisions. The end result will be greater economic opportunities for the residents of North Louisiana.

## About Alliance Partners

Alliance Partners is a network of staff professionals and/or key volunteers from local, parish, or regional organizations involved in economic development across the 14 parishes of North Louisiana. These members have formed an alliance to jointly promote and market North Louisiana. The networking between Alliance Partners helps coordinate marketing efforts in an effective and efficient manner.



Shreveport: 400 Edwards Street • Shreveport, Louisiana • Telephone: (318) 677.2536  
Monroe: 1900 N 18th Street • Monroe, Louisiana • Telephone: (318) 387-0787  
[www.nlep.org](http://www.nlep.org)

## Alliance Partners

<b>Company</b>	<b>Contact</b>	<b>Company</b>	<b>Contact</b>
AEP SWEPCO	Frank Crockett	Louisiana Economic Development Regional Director	Miriam Russell
Atmos Energy	Ann Hayward	LSUS Center for Business and Economic Research	Becky Berry
Bastrop-Morehouse Chamber of Commerce	Dorothy Ford	Minden - South Webster Chamber of Commerce	Mike Moore
Biomedical Research Foundation	Jack Sharp	Monroe Chamber of Commerce	Sue Nicholson
Camp Minden	Jim Knotts	Morehouse Economic Development Corporation	Kay King
Camp Minden Industrial Park	David Tolbert	Natchitoches Area Chamber of Commerce	Nick Pollacia, Jr.
Centerpoint Energy	Jerry Noland	Natchitoches Economic Development Commission	Mike Wolff
City of Bossier City	Pam Glorioso	Natchitoches Parish/Red River Parish Ports	Robert Breedlove
City of Monroe	Dwight Vines	North Delta Regional Planning & Dev.	David Creed
City of Natchitoches	Randy LaCaze	North Webster Industrial District	Mitch Stubblefield
City of Ruston	Kristi Lumpkin	Ouachita Terminals	Paul Trichel
City of Shreveport	Matt Bailey	Parish of Caddo	Randy Lucky
City of West Monroe	Eric Hale	Port of Shreveport Bossier	Brenda Levinson
Claiborne Chamber of Commerce	John Watson	Red River Chamber of Commerce	Martha Gates
Claiborne Electric Power Cooperative	Joey White	Red River Waterway Commission	Randy Walters
Cleco Power LLC	Mike Sibley	Ruston/Lincoln Chamber of Commerce	Scott Terry
Consortium for Education Research & Technology (CERT)	Patti Trudell	Sabine Parish Chamber of Commerce	Liz Tramel
Coordinating & Development Corporation	Buck Trussell	Shreveport Airport Authority	Bill Cooksey
Cyber Innovation Center	GB Cazes	Town of Arcadia	Jan Sims
DADCO Consulting Services, Inc.	David Dodd	Town of Farmerville	M. Stein Baughman, Jr.
DeSoto Parish Chamber of Commerce	Jim May	Town of Greenwood	David L. Hanson
DeSoto Parish Industrial Board	Nita Richardson	Town of Many	Ken Freeman
DeSoto Parish Police Jury	Reggie Roe	Town of Plain Dealing	Dale Barnette
Downtown Development Authority	Don Shea	Town of Vivian	Diann House
Entergy Services Inc.	Don Terry	Union Parish Chamber of Commerce	Jean Jones
Greater Bossier Economic Development Foundation	David Rockett	Valley Electric Member Cooperative	Neal Baremore
Independent Consultant	Arnie Frankel	Village of Simsboro	Willie E. Hendricks
Jackson Parish Chamber of Commerce	Wilda Smith	Vivian Economic Development Corporation	Amanda Murry
Kansas City Southern Railroad	Kevin McIntosh	Ward II Industrial District	Mike Francis
Louisiana Economic Development Regional Director	Chip Rogers	West Monroe/West Ouachita Chamber	Mary Ann Newton



# North Louisiana

## Major Employers Directory

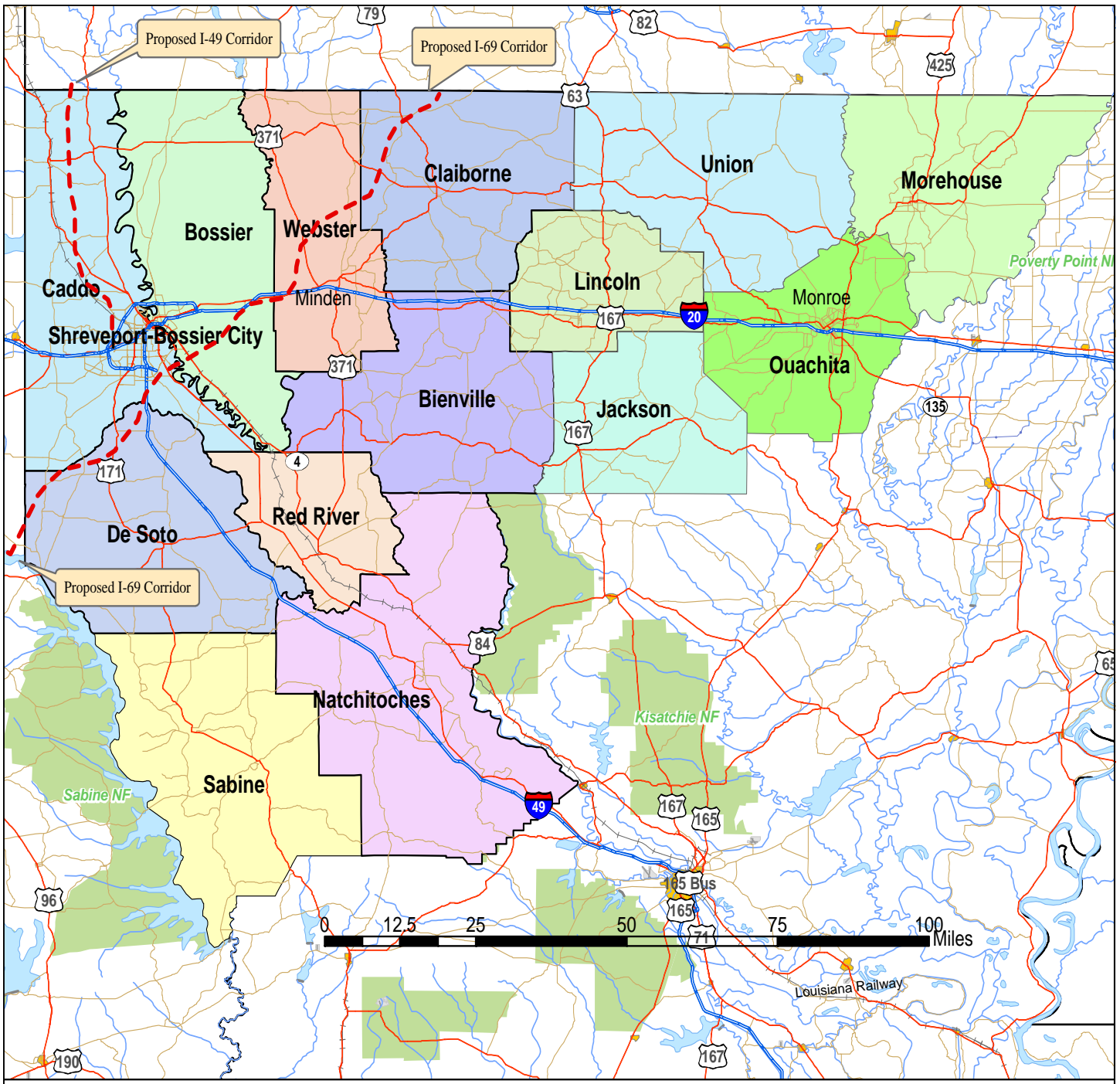
### Table of Contents

Relative Location of Shreveport-Bossier and Monroe-West Monroe To Other Major Cities.....	i
Major Routes in the North Louisiana Fourteen-Parish Region .....	ii
Major Employers by Employee Count.....	1
Major Employers by Business Type .....	11
Major Employers in Alphabetical Order .....	22
Major Employers by Parish, City, and then Company with detail information about company .....	29

Relative Location of Shreveport-Bossier and Monroe-West Monroe to Other Major Cities



# Major Routes in the North Louisiana Fourteen-Parish Region





**Major Employers**

**By**

**Employee Count**



## Major Employers List by Employee Count

Company Name	Type of Business	No. of Employees
State of Louisiana - Dept. of Civil Service	Government	18,873
Barksdale Air Force Base	Military	9,018
Caddo Parish School Board	School System	6,587
LSU Health Sciences Center	Health Care	6,094
Willis Knighton Health System	Health Care	5,490
Ouachita Parish School Board	School System	3,015
Bossier Parish School Board	School System	2,807
City of Shreveport	Government	2,691
Christus Schumpert Health Sys-Shreveport	Health Care	2,018
Harrah's Horseshoe Casino & Hotel Harrah's Louisiana Downs	Gaming Casino & Hotel	2,000
Chase-Monroe	Banking	1,800
St. Francis Medical Center	Health Care	1,671
U.S. Support Company	Call Center	1,618
Overton Brooks VA Medical Center	Health Care	1,533
CenturyLink-Monroe	Phone Service	1,470
Eldorado Resort Casino	Gaming Casino & Hotel	1,400
Louisiana Tech University	Education	1,400
Sam's Town Hotel & Casino Shreveport	Gaming Casino & Hotel	1,265
Brookshire's, Super 1 Food Stores	Grocery	1,220
University of Louisiana At Monroe	Education	1,206
City of Monroe	Government	1,150
Webster Parish School Board	School System	985
U. S. Postal Service	Postal Service	984
Libbey Glass, Inc.	Glassware manufacturer	968
Diamond Jack's Casino Resort	Gaming Casino & Hotel	963
Lincoln Parish School Board	School System	963
Glenwood Regional Medical Ctr	Health Care	950
Gorman Group/Tango Transport, Inc.	Transportation	925
Northwestern State University	Education	912
GM Shreveport Operations	Truck Assembly	900
City of Bossier City	Government	836

## Major Employers List by Employee Count

Company Name	Type of Business	No. of Employees
Natchitoches Parish School Board	School System	823
DeSoto Parish School Board	School System	805
Grambling State University	Education	805
Graphic Packaging Intl-West Monroe	Paper Products	800
House of Raeford Farms LLC Raeford Farms of Louisiana	Poultry Processing	800
The Arc of Caddo-Bossier	Non Profit Organization	800
Boomtown Casino	Gaming Casino & Hotel	780
Caddo Parish Sheriff's Office	Public Service	733
SCC Hodges, Inc	Paper Products	706
Pilgrim's Pride - Natchitoches	Poultry Hatchery	702
AEP Southwestern Electric Power Company	Electrical Power	687
Kansas City Southern Railway Company	Rail Service	668
Foster Farms	Poultry Processing	650
Martco Limited Partnership	Wood Product Mfg	630
Alliance Compressors	Air Conditioning Components	600
Halliburton Energy Services	Oil field services	587
Natchitoches Regional Medical Center	Health Care	575
Frymaster L.L.C.	Food Service Equipment Mfg	560
Bossier Parish Community College	Education	553
Louisiana State University Shreveport	Education	546
Northern Louisiana Medical Center	Health Care	535
International Paper / Industrial Packaging Division	Wood Product Mfg	520
Wal-Mart Supercenter - Shreve City	Retail	520
Minden Medical Center	Health Care	513
Morehouse Parish School Board	School System	507
Wal-Mart Stores Inc. - West Monroe	Retail	500
Wal-Mart Supercenter - Airline Drive	Retail	500
Wal-Mart Supercenter - E. Bert Kouns	Retail	500
Wal-Mart Supercenter - Ruston	Retail	500
Volunteers of America of North Louisiana	Non Profit Organization	495
Caddo Parish Commission	Government	481

## Major Employers List by Employee Count

Company Name	Type of Business	No. of Employees
Goodwill Industries of North Louisiana	Non Profit Organization	478
Centerpoint Energy	Natural Gas	461
Union Parish School Board	School System	460
Wal-Mart Supercenter - Mansfield Rd	Retail	450
CVS/Pharmacy	Drug Store	443
Wal-Mart Supercenter - Westport Avenue	Retail	435
Griggs Enterprises, Inc.- McDonald's	Fast Food Restaurant	433
Sabine Parish School Board	School System	425
Brentwood Behavioral Health System	Health Care	423
Rosbottom Interests	Gaming, Real Estate, Oil & Gas	419
Wal-Mart Supercenter - Minden	Retail	415
Northwest Supports & Services Center	Health Care - Residential Facility	414
Wal-Mart Stores Inc - Monroe	Retail	412
Kenyan Enterprises Inc. (Piggly Wiggly & Save-A-Lot)	Grocery	408
David Wade Correctional Center Louisiana Dept of Corrections	Corrections Facility - Male	403
Bienville Parish School Board	School System	400
Cellxion, LLC	Com Towers/Concrete Shelters	400
Roundtree Automotive Group, LLC	Automotive Dealership	400
Louisiana United Methodist Children's Home	Residential Facility	392
Wal-Mart Supercenter - Natchitoches	Retail	382
Boise Cascade LLC	Wood Product Mfg	378
Newman Investments (Church's Chicken / Popeye's Chicken)	Fast Food Restaurant	372
CenturyTel-Shreveport	Call Center	371
Kroger Food Stores	Grocery	370
LifeCare Hospitals, Inc.	Health Care	370
Jackson Parish School Board	School System	360
Saint Gobain Container Company	Glassware manufacturer	350
Southern University at Shreveport	Education	344
Express Jet, Inc. dba Continental Express Airline	Aircraft Repair Service	341

## Major Employers List by Employee Count

Company Name	Type of Business	No. of Employees
Highland Clinic, A Professional Medical Corporation	Health Care	340
Target Store - Shreveport	Retail	340
International Paper-Red River Mill	Wood Product Mfg	331
Evergreen Presbyterian Ministries, Inc	Res Care Services Ind/Family	329
Fleming Subway Restaurants, Inc.	Fast Food Restaurant	325
Promise Specialty Hospital of Shreveport	Health Care - Long Term Care	322
City of Ruston	Government	321
Priority Staffing Inc	Employment Agency	314
Holy Angels Residential Facility	Residential Facility	311
Centenary College of Louisiana	Education	306
C & L Shreveport, LLC (Burger King)	Fast Food Restaurant	305
Pizza Hut International	Fast Food Restaurant	301
Monroe Manufacturing Inc	Manufacturer/plastic bottles	300
P S O Inc./ Broyles Group	Convenience Store	300
Sears, Roebuck & Co - Monroe	Retail	300
Securitas USA	Security Guard Service	300
Morehouse General Hospital Inc	Health Care	295
DeSoto Regional Health System	Health Care	292
JDS Restaurants, Inc. (Taco Bell)	Fast Food Restaurant	289
Ivan Smith Furniture	Retail - Furniture	284
HealthSouth Specialty Hospital of North Louisiana	Health Care - Long Term Care	275
Interstate Brands Corp	Manufacturer/Breads	275
Wal-Mart Stores Inc - Bastrop	Retail	275
Homer Memorial Hospital	Health Care	267
Red River Parish School Board	School System	267
Schlumberger Technology Corp	Well logging service	260
Trane Company	Air Conditioning Components	260
International Paper Natchitoches i-level Lumber Technologies	Wood Product Mfg	256
Wendy's Restaurants	Fast Food Restaurant	252
Barksdale Federal Credit Union	Banking-Credit Union	250
Foremost Dairy	Food Mfg - milk/juice distributor	250

## Major Employers List by Employee Count

Company Name	Type of Business	No. of Employees
Regions Bank - Shreveport	Banking	250
Weyerhaeuser Company - Zwolle Sawmill	Wood Product Mfg	250
The Times—Shreveport	Publishing	248
Gehls, Inc. - McDonald's	Fast Food Restaurant	243
Southeast Restaurant Inc, dba KFC	Fast Food Restaurant	243
Chase-Shreveport	Banking	237
Bass Pro Shop	Retail	235
Capital One-Shreveport	Banking	234
Parish of Natchitoches	Government	232
Springhill Medical Center	Health Care	232
Big Star Supermarket of Many Inc	Grocery	225
Genesis Energy/dba Davison Transport	Trucking	225
The Glen Retirement System	Health Care - Long Term Care	224
Gannett Co Inc-Monroe	Publishing	220
United Parcel Service	Air Freight	220
Georgia-Pacific LLC	Paper Products	215
RPM (Domino's) Pizza	Fast Food Restaurant	214
City of Minden	Government	213
Southeast Foods Inc	Grocery	212
Nurse Care of Shreveport	Nursing Home	205
Belk Inc.-Monroe	Retail	200
Care Solutions Inc	Health Care	200
Certicare Services of Ruston	Home Health Care Services	200
City of Bastrop	Government	200
Dillard's Inc.-Monroe	Retail	200
Dolet Hills Mining Venture	Lignite coal surface mining	200
Franke Consumer Products, Inc	Metal Product Mfg	200
Kilpatrick Life Insurance Company	Insurance	200
McElroy Metal, Inc.	Roofing	200
Petro PSCLP	Truck Stop	200
Target Corp - Monroe	Retail	200
Wal-Mart Stores Inc - Jonesboro	Retail	200

## Major Employers List by Employee Count

Company Name	Type of Business	No. of Employees
Wal-Mart Stores Inc - Monroe	Retail	200
Best Buy Company-Shreveport	Retail	199
Shriners Hospitals for Children	Health Care	194
Sam's Club - Shreveport	Wholesale Club	192
Louisiana School for Math, Science, and the Arts	Education	188
Western Development Group Inc	Real Estate Agent/Manager	188
Wal-Mart Stores Inc - Mansfield	Retail	187
Angus Chemical Co	Chemicals Manufacturer	185
JC Penney - Youree	Retail	185
Sabine Medical Center	Health Care	185
Union Pacific Railroad Company	Rail Service	182
North Caddo Medical Center	Health Care	181
Aramark Services Inc - La Tech	Food Service	180
Louisiana Coca-Cola Bottling-Monroe	Bottling Company	180
Printpack inc.	Flexible Packaging	180
Republic Contractors Inc	Plumbing/Heat/Ac Contractor	178
Dillard's Department Store - Shreveport	Retail	176
Garden Park Nursing & Rehab	Skilled Nursing Care Facility	176
James Machine Works Inc	Metal Product Mfg	176
Christus Coushatta Health Care Center - Coushatta	Health Care	175
IHS of Pierremont	Nursing Home	175
Vinson Guard Service Inc	Detective/Armored Car Services	175
LifeShare Blood Centers	Blood Center - Regional Non-profit	170
Lowe's Home Centers - Monroe	Home Improvement Center	170
Lowe's Home Center - Youree	Home Improvement Center	167
BJ Services Co	Oil Field Services	166
Budget PrePay, Inc.	Phone Services	166
Deep South Equipment Company	Hyster Fork Lifts	165
Holmes Auto Group Companies	Automotive Dealership	165
Porter's of LA., LLC	Dry Cleaning	165
Securitas Security Services	Security Guard Service	165
Wal-Mart Stores Inc - Farmerville	Retail	165

## Major Employers List by Employee Count

Company Name	Type of Business	No. of Employees
Shreve Memorial Library	Public Library	163
International Paper/Container Division	Wood Product Mfg	161
Kllm Transport Services Inc	Transportation	160
McInnis Brothers Construction, Inc.	Contractor	160
People Centered Support Services	Job Training	160
Shaw Alloy Piping Products Co., Inc.	Fabricated Metal Products	160
UOP, LLC	Chemicals Manufacturer	159
Continental Structural Plastics (CSP)	Air Conditioning Components	157
Shaw Process Fabricators Inc	Fabricated Metal Products	154
Dillard's Department Store - Bossier City	Retail	151
Breck Construction Co Inc	Contractor	150
Brookshire Grocery Co - West Monroe	Grocery	150
Coca-Cola Bottling Company of Shreveport	Bottling Company	150
Conco Food Service	Food Service	150
DSD Community Connection Inc	Health Care	150
Home Depot - Pines Road	Home Improvement Center	150
JC Penney - Monroe	Retail	150
Lowe's Home Center - Alkay	Home Improvement Center	150
P & S Surgical Hospital	Health Care	150
Ryan Mitsubishi	Automotive Dealership	150
The Guest House, LLC	Nursing Home	150
Town & Country Nursing Center, LLC, dba Town & Country Health & Rehab	Skilled Nursing Care Facility	150
United Bilt Homes Inc.	Construction - Home	150
CLECO	Electrical Power	148
Cornerstone Hospital of Bossier City	Health Care	146
Guest House at Springlake, LLC	Nursing Home	146
Williamson Industries Inc	Building Materials	146
Apple Arkansas Inc dba Applebee's	Restaurant	145
Morgan Automotive Group	Automotive Dealership	142
Christus Health-Monroe	Nursing and/or Retirement Home	140
Claiborne Parish School Board	School System	140

## Major Employers List by Employee Count

Company Name	Type of Business	No. of Employees
Heritage Manor South	Health Care - Long Term Care	140
Industrial Insul Group LLC Pabco Insulation Division	Adhesive manufacturer	140
Lowe's Home Center - Airline	Home Improvement Center	140
Lowe's Home Center - Ruston	Home Improvement Center	140
Mariner Health Care Inc	Nursing and/or Retirement Home	140
Union General Hospital	Health Care	140
Hardware Distribution Warehouses, Inc.	Wholesale Hardware Distributor	139
Flakeboard	Wood Product Mfg	138
Harrison Company, LLC	Wholesale Food Distributor	138
Metro Aviation Inc	Aircraft Repair Service	137
Gateway Tire Co	Tires Sales & Service	135
Thrifty Liquor Stores	Retail	135
U. L. Coleman Properties Ltd.	Property Management	135
Ark-La-Tex Cardiology	Health Care	134
FitzGerald Contractors, LLC	Contractor - Mechanical	134
Meadowview Health and Rehab Center	Nursing Home	134
MINACT Inc	Education	134
Pilgrim Manor Guest Care	Nursing Home	133
AFS Logistics LLC	Logistics Management	132
Moore's Retread & Tire of the Ark-La-Tex, Inc. dba Moore's Goodyear	Tires Sales & Service	131
Shreveport Transit Management, Inc.	Public Transit Operations	131
Alpha Nursing Services Inc	Nurse Staffing Employment Agency	130
Baptist Retirement Center of Arcadia	Nursing Home	130
Calumet Shreveport Lubricants & Waxes LLC	Petroleum Products	130
Clubcorp USA Inc	Membership Sport/Recreation Club	130
Fairfield Property Management	Property Management	130
Home Depot - Bert Kouns	Home Improvement Center	130
Home Depot - Bossier City	Home Improvement Center	130
Integrated Technical Products	Engineering Services	130
Live Oak Retirement Community	Health Care - Long Term Care	130

## Major Employers List by Employee Count

Company Name	Type of Business	No. of Employees
Ternium USA Inc	Steel Work Mfg	130
West Monroe Guest House	Nursing and/or Retirement Home	130
Red Ball Oxygen Company, Inc.	Chemicals Manufacturer	129
Eagle Distributing of Shreveport	Beverage Distribution	127
Weyerhaeuser Company - Arcadia	Wood Product Mfg	126
Courtesy Chevrolet, Inc. dba Chevyland	Automotive Dealership	125
Leslie Lakes Retirement Center	Retirement Center	125
Louisiana Association for the Blind	Paper Products	125
Progressive Bank	Banking	125
Wal-Mart Stores, Inc. - Many	Retail	125
Louisiana Plastic Converting	Refuse System	121
Yokem Motors Inc dba Yokem Toyota, dba Yokem Scion	Automotive Dealership	121
ALSCO	Linen Supply Services	120
Arcadia Nursing & Rehab	Skilled Nursing Care Facility	120
Berry Plastics	Packaging materials	120
Brookshire Grocery Co - Bastrop	Grocery	120
Cherry Ridge Guest Care LLC	Nursing and/or Retirement Home	120
Graphic Packaging Intl-Arcadia	Shipping Bag Manufacturer	120
Reynolds Industrial Contractors, Inc.	Fabricated Metal Products	120
Virginia Hall Nursing Home Inc	Skilled Nursing Care Facility	120
Red River Motor Company	Automotive Dealership	118
Diamond B Construction Co LLC	Contractor	117
Louisiana Lift & Equipment Inc.	Industrial Machinery	117
JC Penney - Bossier City	Retail	116
KTBS, Inc.	Television Station	116
Doctors Hospital-Shreveport	Health Care	115
Gordon, Inc.	Building Materials	115
Landmark of Shreveport	Nursing Home	115
Madden Contracting Company, Inc.	Contractor	115
Albertson's Food & Drug Stores - Shreveport	Grocery	113
Allen Millwork, Inc.	Building Materials	110

## Major Employers List by Employee Count

Company Name	Type of Business	No. of Employees
National Mail-It Inc	Direct Mail Advertising Services	110
Rose View Nursing Center	Nursing Home	110
Ryan Chevrolet, Subaru Inc	Automotive Dealership	110
Sears Roebuck & Company Shreveport & Bossier City	Retail	110
Albertson's Food & Drug Stores - Bossier City	Grocery	105
Posado's Mexican Restaurants Shreveport/Bossier City	Restaurant	105
Kmart Corp	Dept Stores Discount	104
Ouachita Independent Bank	Banking	104
Sol's Pipe & Steel Inc	Metal Product Mfg	103
Texas Roadhouse of Bossier City LLC	Restaurant	102
Busada Industries Inc	Crude Petroleum Production	100
C, W & W Contractors Inc	Heavy Construction	100
CertainTeed	Roofing	100
El Chico Restaurants-Monroe	Restaurant	100
G & H Property Inc	Fast Food Restaurant	100
Garrett Manufacturing LLC	Distribution/Manufacturing	100
General Mills Inc	Manufactures flour mixes	100
Hixson Autoplex of Monroe Inc	Automotive Dealership	100
Home Depot - Monroe	Home Improvement Center	100
Koch Industries Inc	Chemicals Manufacturer	100
M L Smith, Jr Inc	Masonry/Stone Contractor	100
Plantation Management Corp	Nursing and/or Retirement Home	100
Plymouth Tube Co	Metal Product Mfg	100
Red River Center Corp	Nursing Home	100
Roof Masters of N America LLC	Roofing	100
Ryan's Restaurant Group Inc	Restaurant	100
Summerlin Lane Nursing Homes	Nursing and/or Retirement Home	100
Voith Paper Fabrics	Textile Mill	100
Voith Paper Rolls South Inc	Textile Mills	100

**Major Employers**

**By**

**Business Type**



# Major Employers by Business Type

Type of Business	No. of Employees
<b>Adhesive manufacturer</b>	
Industrial Insul Group LLC	
Pabco Insulation Division	140
<b>Air Conditioning Components</b>	
Alliance Compressors	600
Continental Structural Plastics (CSP)	157
Trane Company	260
<b>Air Freight</b>	
United Parcel Service	220
<b>Aircraft Repair Service</b>	
Express Jet, Inc. dba Continental Express Airline	341
Metro Aviation Inc	137
<b>Automotive Dealership</b>	
Courtesy Chevrolet, Inc. dba Chevyland	125
Hixson Autoplex of Monroe Inc	100
Holmes Auto Group Companies	165
Morgan Automotive Group	142
Red River Motor Company	118
Roundtree Automotive Group, LLC	400
Ryan Chevrolet, Subaru Inc	110
Ryan Mitsubishi	150
Yokem Motors Inc dba Yokem Toyota, dba Yokem Scion	121
<b>Banking</b>	
Capital One-Shreveport	234
Chase-Monroe	1,800
Chase-Shreveport	237
Ouachita Independent Bank	104
Progressive Bank	125
Regions Bank - Shreveport	250
<b>Banking-Credit Union</b>	
Barksdale Federal Credit Union	250
<b>Beverage Distribution</b>	
Eagle Distributing of Shreveport	127
<b>Blood Center - Regional Non-profit</b>	
LifeShare Blood Centers	170
<b>Bottling Company</b>	
Coca-Cola Bottling Company of Shreveport	150
Louisiana Coca-Cola Bottling-Monroe	180
<b>Building Materials</b>	
Allen Millwork, Inc.	110
Gordon, Inc.	115
Williamson Industries Inc	146

## Major Employers by Business Type

Type of Business	No. of Employees
<b>Call Center</b>	
CenturyTel-Shreveport	371
U.S. Support Company	1,618
<b>Chemicals Manufacturer</b>	
Angus Chemical Co	185
Koch Industries Inc	100
Red Ball Oxygen Company, Inc.	129
UOP, LLC	159
<b>Com Towers/Concrete Shelters</b>	
Cellxion, LLC	400
<b>Construction - Home</b>	
United Bilt Homes Inc.	150
<b>Contractor</b>	
Breck Construction Co Inc	150
Diamond B Construction Co LLC	117
Madden Contracting Company, Inc.	115
McInnis Brothers Construction, Inc.	160
<b>Contractor - Mechanical</b>	
FitzGerald Contractors, LLC	134
<b>Convenience Store</b>	
P S O Inc./ Broyles Group	300
<b>Corrections Facility - Male</b>	
David Wade Correctional Center - Louisiana Dept of Corrections	403
<b>Crude Petroleum Production</b>	
Busada Industries Inc	100
<b>Dept Stores Discount</b>	
Kmart Corp	104
<b>Detective/Armored Car Services</b>	
Vinson Guard Service Inc	175
<b>Direct Mail Advertising Services</b>	
National Mail-It Inc	110
<b>Distribution/Manufacturing</b>	
Garrett Manufacturing LLC	100
<b>Drug Store</b>	
CVS/Pharmacy	443
<b>Dry Cleaning</b>	
Porter's of LA., LLC	165

# Major Employers by Business Type

Type of Business	No. of Employees
------------------	------------------

## Education

Bossier Parish Community College	553
Centenary College of Louisiana	306
Grambling State University	805
Louisiana School for Math, Science, and the Arts	188
Louisiana State University Shreveport	546
Louisiana Tech University	1,400
MINACT Inc	134
Northwestern State University	912
Southern University at Shreveport	344
University of Louisiana At Monroe	1,206

## Electrical Power

AEP Southwestern Electric Power Company	687
CLECO	148

## Employment Agency

Priority Staffing Inc	314
-----------------------	-----

## Engineering Services

Integrated Technical Products	130
-------------------------------	-----

## Fabricated Metal Products

Reynolds Industrial Contractors, Inc.	120
Shaw Alloy Piping Products Co., Inc.	160
Shaw Process Fabricators Inc	154

## Fast Food Restaurant

C & L Shreveport, LLC (Burger King)	305
Fleming Subway Restaurants, Inc.	325
G & H Property Inc	100
Gehls, Inc. - McDonald's	243
Griggs Enterprises, Inc.- McDonald's	433
JDS Restaurants, Inc. (Taco Bell)	289
Newman Investments (Church's Chicken / Popeye's Chicken)	372
Pizza Hut International	301
RPM (Domino's) Pizza	214
Southeast Restaurant Inc, dba KFC	243
Wendy's Restaurants	252

## Flexible Packaging

Printpack inc.	180
----------------	-----

## Food Mfg - milk/juice distributor

Foremost Dairy	250
----------------	-----

## Food Service

Aramark Services Inc - La Tech	180
Conco Food Service	150

# Major Employers by Business Type

Type of Business	No. of Employees
<b>Food Service Equipment Mfg</b>	
Frymaster L.L.C.	560
<b>Gaming Casino &amp; Hotel</b>	
Boomtown Casino	780
Diamond Jack's Casino Resort	963
Eldorado Resort Casino	1,400
Harrah's Horseshoe Casino & Hotel/ Harrah's Louisiana Downs	2,000
Sam's Town Hotel & Casino Shreveport	1,265
<b>Gaming, Real Estate, Oil &amp; Gas</b>	
Rosbottom Interests	419
<b>Glassware manufacturer</b>	
Libbey Glass, Inc.	968
Saint Gobain Container Company	350
<b>Government</b>	
Caddo Parish Commission	481
City of Bastrop	200
City of Bossier City	836
City of Minden	213
City of Monroe	1,150
City of Ruston	321
City of Shreveport	2,691
Parish of Natchitoches	232
State of Louisiana - Dept. of Civil Service	18,873
<b>Grocery</b>	
Albertson's Food & Drug Stores - Bossier City	105
Albertson's Food & Drug Stores - Shreveport	113
Big Star Supermarket of Many Inc	225
Brookshire Grocery Co - Bastrop	120
Brookshire Grocery Co - West Monroe	150
Brookshire's, Super 1 Food Stores	1,220
Kenyan Enterprises Inc. (Piggly Wiggly & Save-A-Lot)	408
Kroger Food Stores	370
Southeast Foods Inc	212
<b>Health Care</b>	
Ark-La-Tex Cardiology	134
Brentwood Behavioral Health System	423
Care Solutions Inc	200
Christus Coushatta Health Care Center - Coushatta	175
Christus Schumpert Health Sys-Shreveport	2,018
Cornerstone Hospital of Bossier City	146
DeSoto Regional Health System	292
Doctors Hospital-Shreveport	115
DSD Community Connection Inc	150
Glenwood Regional Medical Ctr	950
Highland Clinic, A Professional Medical Corporation	340

## Major Employers by Business Type

Type of Business	No. of Employees
Homer Memorial Hospital	267
LifeCare Hospitals, Inc.	370
LSU Health Sciences Center	6,094
Minden Medical Center	513
Morehouse General Hospital Inc	295
Natchitoches Regional Medical Center	575
North Caddo Medical Center	181
Northern Louisiana Medical Center	535
Overton Brooks VA Medical Center	1,533
P & S Surgical Hospital	150
Sabine Medical Center	185
Shriners Hospitals for Children	194
Springhill Medical Center	232
St Francis Medical Center	1,671
Union General Hospital	140
Willis Knighton Health System	5,490
<b>Health Care - Long Term Care</b>	
Live Oak Retirement Community	130
Promise Specialty Hospital of Shreveport	322
The Glen Retirement System	224
HealthSouth Specialty Hospital of North Louisiana	275
Heritage Manor South	140
<b>Health Care - Residential Facility</b>	
Northwest Supports & Services Center	414
<b>Heavy Construction</b>	
C, W & W Contractors Inc	100
<b>Home Health Care Services</b>	
Certicare Services of Ruston	200
<b>Home Improvement Center</b>	
Home Depot - Bert Kouns	130
Home Depot - Bossier City	130
Home Depot - Monroe	100
Home Depot - Pines Road	150
Lowe's Home Center - Airline	140
Lowe's Home Center - Alkay	150
Lowe's Home Center - Ruston	140
Lowe's Home Center - Youree	167
Lowe's Home Centers - Monroe	170
<b>Hyster Fork Lifts</b>	
Deep South Equipment Company	165
<b>Industrial Machinery</b>	
Louisiana Lift & Equipment Inc.	117

## Major Employers by Business Type

Type of Business	No. of Employees
<b>Insurance</b>	
Kilpatrick Life Insurance Company	200
<b>Job Training</b>	
People Centered Support Services	160
<b>Lignite coal surface mining</b>	
Dolet Hills Mining Venture	200
<b>Linen Supply Services</b>	
ALSCO	120
<b>Logistics Management</b>	
AFS Logistics LLC	132
<b>Manufacturer/Breads</b>	
Interstate Brands Corp	275
<b>Manufacturer/plastic bottles</b>	
Monroe Manufacturing Inc	300
<b>Manufactures flour mixes</b>	
General Mills Inc	100
<b>Masonry/Stone Contractor</b>	
M L Smith, Jr Inc	100
<b>Membership Sport/Recreation Club</b>	
Clubcorp USA Inc	130
<b>Metal Product Mfg</b>	
Franke Consumer Products, Inc	200
James Machine Works Inc	176
Plymouth Tube Co	100
Sol's Pipe & Steel Inc	103
<b>Military</b>	
Barksdale Air Force Base	9,018
<b>Natural Gas</b>	
Centerpoint Energy	461
<b>Non Profit Organization</b>	
Goodwill Industries of North Louisiana	478
The Arc of Caddo-Bossier	800
Volunteers of America of North Louisiana	495
<b>Nurse Staffing Employment Agency</b>	
Alpha Nursing Services Inc	130

# Major Employers by Business Type

Type of Business	No. of Employees
<b>Nursing and/or Retirement Home</b>	
Cherry Ridge Guest Care LLC	120
Christus Health-Monroe	140
Mariner Health Care Inc	140
Plantation Management Corp	100
Summerlin Lane Nursing Homes	100
West Monroe Guest House	130
<b>Nursing Home</b>	
Baptist Retirement Center of Arcadia	130
Guest House at Springlake, LLC	146
IHS of Pierremont	175
Landmark of Shreveport	115
Meadowview Health and Rehab Center	134
Nurse Care of Shreveport	205
Pilgrim Manor Guest Care	133
Red River Center Corp	100
Rose View Nursing Center	110
The Guest House, LLC	150
<b>Oil Field Services</b>	
BJ Services Co	166
Halliburton Energy Services	587
<b>Packaging materials</b>	
Berry Plastics	120
<b>Paper Products</b>	
Georgia-Pacific LLC	215
Graphic Packaging Intl-West Monroe	800
Louisiana Association for the Blind	125
SCC Hodges, Inc	706
<b>Petroleum Products</b>	
Calumet Shreveport Lubricants & Waxes LLC	130
<b>Phone Service</b>	
CenturyLink-Monroe	1,470
Budget PrePay, Inc.	166
<b>Plumbing/Heat/Ac Contractor</b>	
Republic Contractors Inc	178
<b>Postal Service</b>	
U. S. Postal Service	984
<b>Poultry Hatchery</b>	
Pilgrim's Pride - Natchitoches	702
<b>Poultry Processing</b>	
Foster Farms	650
House of Raeford Farms LLC	
Raeford Farms of Louisiana	800

## Major Employers by Business Type

Type of Business	No. of Employees
<b>Property Management</b>	
Fairfield Property Management	130
U. L. Coleman Properties Ltd.	135
<b>Public Library</b>	
Shreve Memorial Library	163
<b>Public Service</b>	
Caddo Parish Sheriff's Office	733
<b>Public Transit Operations</b>	
Shreveport Transit Management, Inc.	131
<b>Publishing</b>	
Gannett Co Inc - Monroe	220
The Times - Shreveport	248
<b>Rail Service</b>	
Kansas City Southern Railway Company	668
Union Pacific Railroad Company	182
<b>Real Estate Agent/Manager</b>	
Western Development Group Inc	188
<b>Refuse System</b>	
Louisiana Plastic Converting	121
<b>Res Care Services Ind/Family</b>	
Evergreen Presbyterian Ministries, Inc	329
<b>Residential Facility</b>	
Holy Angels Residential Facility	311
Louisiana United Methodist Children's Home	392
<b>Restaurant</b>	
Apple Arkansas Inc dba Applebee's	145
El Chico Restaurants-Monroe	100
Posado's Mexican Restaurants - Shreveport/Bossier	105
Ryan's Restaurant Group Inc	100
Texas Roadhouse of Bossier City LLC	102
<b>Retail</b>	
Bass Pro Shop	235
Belk Inc.-Monroe	200
Best Buy Company-Shreveport	199
Dillard's Department Store - Bossier City	151
Dillard's Department Store - Shreveport	176
Dillard's Inc.-Monroe	200
JC Penney - Bossier City	116
JC Penney - Monroe	150
JC Penney - Youree	185

## Major Employers by Business Type

Type of Business	No. of Employees
Sears Roebuck & Company - Shreveport & Bossier City	110
Sears, Roebuck & Co - Monroe	300
Target Corp - Monroe	200
Target Store - Shreveport	340
Thrifty Liquor Stores	135
Wal-Mart Stores Inc - Bastrop	275
Wal-Mart Stores Inc - Farmerville	165
Wal-Mart Stores Inc - Jonesboro	200
Wal-Mart Stores Inc - Mansfield	187
Wal-Mart Stores Inc - Monroe	412
Wal-Mart Stores Inc - Monroe	200
Wal-Mart Stores Inc. - West Monroe	500
Wal-Mart Stores, Inc. - Many	125
Wal-Mart Supercenter - Airline Drive	500
Wal-Mart Supercenter - E. Bert Kouns	500
Wal-Mart Supercenter - Minden	415
Wal-Mart Supercenter - Natchitoches	382
Wal-Mart Supercenter - Ruston	500
Wal-Mart Supercenter - Shreve City	520
Wal-Mart Supercenter - Westport Avenue	435
Wal-Mart Supercenter - Mansfield Rd	450
<b>Retail - Furniture</b>	
Ivan Smith Furniture	284
<b>Retirement Center</b>	
Leslie Lakes Retirement Center	125
<b>Roofing</b>	
CertainTeed	100
McElroy Metal, Inc.	200
Roof Masters of N America LLC	100
<b>School System</b>	
Bienville Parish School Board	400
Bossier Parish School Board	2,807
Caddo Parish School Board	6,587
Claiborne Parish School Board	140
DeSoto Parish School Board	805
Jackson Parish School Board	360
Lincoln Parish School Board	963
Morehouse Parish School Board	507
Natchitoches Parish School Board	823
Ouachita Parish School Board	3,015
Red River Parish School Board	267
Sabine Parish School Board	425
Union Parish School Board	460
Webster Parish School Board	985

## Major Employers by Business Type

Type of Business	No. of Employees
<b>Security Guard Service</b>	
Securitas Security Services	165
Securitas USA	300
<b>Shipping Bag Manufacturer</b>	
Graphic Packaging Intl-Arcadia	120
<b>Skilled Nursing Care Facility</b>	
Arcadia Nursing & Rehab	120
Garden Park Nursing & Rehab	176
Town & Country Nursing Center, LLC, dba Town & Country Health & Rehab	150
Virginia Hall Nursing Home Inc	120
<b>Steel Work Mfg</b>	
Ternium USA Inc	130
<b>Television Station</b>	
KTBS, Inc.	116
<b>Textile Mill</b>	
Voith Paper Fabrics	100
Voith Paper Rolls South Inc	100
<b>Tires Sales &amp; Service</b>	
Gateway Tire Co	135
Moore's Retread & Tire of the Ark-La-Tex, Inc. dba Moore's Goodyear	131
<b>Transportation</b>	
Gorman Group/Tango Transport, Inc.	925
Kllm Transport Services Inc	160
<b>Truck Assembly</b>	
GM Shreveport Operations	900
<b>Truck Stop</b>	
Petro PSCLP	200
<b>Trucking</b>	
Genesis Energy/dba Davison Transport	225
<b>Well logging service</b>	
Schlumberger Technology Corp	260
<b>Wholesale Club</b>	
Sam's Club - Shreveport	192
<b>Wholesale Food Distributor</b>	
Harrison Company, LLC	138
<b>Wholesale Hardware Distributor</b>	
Hardware Distribution Warehouses, Inc.	139

# Major Employers by Business Type

Type of Business	No. of Employees
<b>Wood Product Mfg</b>	
Boise Cascade LLC	378
Flakeboard	138
International Paper / Industrial Packaging Division	520
International Paper- Natchitoches i-level Lumber Technologies	256
International Paper/Container Division	161
International Paper-Red River Mill	331
Martco Limited Partnership	630
Weyerhaeuser Company - Arcadia	126
Weyerhaeuser Company - Zwolle Sawmill	250



**Major Employers**

**In**

**Alphabetical Order**



## Major Employers in Alphabetical Order

Company Name	Type of Business	No. of Employees
AEP Southwestern Electric Power Company	Electrical Power	687
AFS Logistics LLC	Logistics Management	132
Albertson's Food & Drug Stores - Bossier City	Grocery	105
Albertson's Food & Drug Stores - Shreveport	Grocery	113
Allen Millwork, Inc.	Building Materials	110
Alliance Compressors	Air Conditioning Components	600
Alpha Nursing Services Inc	Nurse Staffing Employment Agency	130
ALSCO	Linen Supply Services	120
Angus Chemical Co	Chemicals Manufacturer	185
Apple Arkansas Inc dba Applebee's	Restaurant	145
Aramark Services Inc - La Tech	Food Service	180
Arcadia Nursing & Rehab	Skilled Nursing Care Facility	120
Ark-La-Tex Cardiology	Health Care	134
Baptist Retirement Center of Arcadia	Nursing Home	130
Barksdale Air Force Base	Military	9,018
Barksdale Federal Credit Union	Banking-Credit Union	250
Bass Pro Shop	Retail	235
Belk Inc.-Monroe	Retail	200
Berry Plastics	Packaging materials	120
Best Buy Company-Shreveport	Retail	199
Bienville Parish School Board	School System	400
Big Star Supermarket of Many Inc	Grocery	225
BJ Services Co	Oil Field Services	166
Boise Cascade LLC	Wood Product Mfg	378
Boomtown Casino	Gaming Casino & Hotel	780
Bossier Parish Community College	Education	553
Bossier Parish School Board	School System	2,807
Breck Construction Co Inc	Contractor	150
Brentwood Behavioral Health System	Health Care	423
Brookshire Grocery Co - Bastrop	Grocery	120
Brookshire Grocery Co - West Monroe	Grocery	150
Brookshire's, Super 1 Food Stores	Grocery	1,220
Budget PrePay, Inc.	Phone Services	166
Busada Industries Inc	Crude Petroleum Production	100
C & L Shreveport, LLC (Burger King)	Fast Food Restaurant	305
C, W & W Contractors Inc	Heavy Construction	100
Caddo Parish Commission	Government	481
Caddo Parish School Board	School System	6,587
Caddo Parish Sheriff's Office	Public Service	733
Calumet Shreveport Lubricants & Waxes LLC	Petroleum Products	130
Capital One-Shreveport	Banking	234
Care Solutions Inc	Health Care	200
Cellxion, LLC	Com Towers/Concrete Shelters	400
Centenary College of Louisiana	Education	306
Centerpoint Energy	Natural Gas	461
CenturyLink-Monroe	Phone Service	1,470
CenturyTel-Shreveport	Call Center	371

## Major Employers in Alphabetical Order

Company Name	Type of Business	No. of Employees
CertainTeed	Roofing	100
Certicare Services of Ruston	Home Health Care Services	200
Chase-Monroe	Banking	1,800
Chase-Shreveport	Banking	237
Cherry Ridge Guest Care LLC	Nursing and/or Retirement Home	120
Christus Coshatta Health Care Center	Health Care	175
Christus Health-Monroe	Nursing and/or Retirement Home	140
Christus Schumpert Health Sys-Shreveport	Health Care	2,018
City of Bastrop	Government	200
City of Bossier City	Government	836
City of Minden	Government	213
City of Monroe	Government	1,150
City of Ruston	Government	321
City of Shreveport	Government	2,691
Claiborne Parish School Board	School System	140
CLECO	Electrical Power	148
Clubcorp USA Inc	Membership Sport/Recreation Club	130
Coca-Cola Bottling Company of Shreveport	Bottling Company	150
Conco Food Service	Food Service	150
Continental Structural Plastics (CSP)	Air Conditioning Components	157
Cornerstone Hospital of Bossier City	Health Care	146
Courtesy Chevrolet, Inc. dba Chevyland	Automotive Dealership	125
CVS/Pharmacy	Drug Store	443
David Wade Correctional Center		
Louisiana Dept of Corrections	Corrections Facility - Male	403
Deep South Equipment Company	Hyster Fork Lifts	165
DeSoto Parish School Board	School System	805
DeSoto Regional Health System	Health Care	292
Diamond B Construction Co LLC	Contractor	117
Diamond Jack's Casino Resort	Gaming Casino & Hotel	963
Dillard's Department Store - Bossier City	Retail	151
Dillard's Department Store - Shreveport	Retail	176
Dillard's Inc.-Monroe	Retail	200
Doctors Hospital-Shreveport	Health Care	115
Dolet Hills Mining Venture	Lignite coal surface mining	200
DSD Community Connection Inc	Health Care	150
Eagle Distributing of Shreveport	Beverage Distribution	127
El Chico Restaurants-Monroe	Restaurant	100
Eldorado Resort Casino	Gaming Casino & Hotel	1,400
Evergreen Presbyterian Ministries, Inc	Res Care Services Ind/Family	329
Express Jet, Inc. dba Continental Express Airline	Aircraft Repair Service	341
Fairfield Property Management	Property Management	130
FitzGerald Contractors, LLC	Contractor - Mechanical	134
Flakeboard	Wood Product Mfg	138
Fleming Subway Restaurants, Inc.	Fast Food Restaurant	325
Foremost Dairy	Food Mfg - milk/juice distributor	250
Foster Farms	Poultry Processing	650

## Major Employers in Alphabetical Order

Company Name	Type of Business	No. of Employees
Franke Consumer Products, Inc	Metal Product Mfg	200
Frymaster L.L.C.	Food Service Equipment Mfg	560
G & H Property Inc	Fast Food Restaurant	100
Gannett Co Inc-Monroe	Publishing	220
Garden Park Nursing & Rehab	Skilled Nursing Care Facility	176
Garrett Manufacturing LLC	Distribution/Manufacturing	100
Gateway Tire Co	Tires Sales & Service	135
Gehls, Inc. - McDonald's	Fast Food Restaurant	243
General Mills Inc	Manufactures flour mixes	100
Genesis Energy/dba Davison Transport	Trucking	225
Georgia-Pacific LLC	Paper Products	215
Glenwood Regional Medical Ctr	Health Care	950
GM Shreveport Operations	Truck Assembly	900
Goodwill Industries of North Louisiana	Non Profit Organization	478
Gordon, Inc.	Building Materials	115
Gorman Group/Tango Transport, Inc.	Transportation	925
Grambling State University	Education	805
Graphic Packaging Intl-Arcadia	Shipping Bag Manufacturer	120
Graphic Packaging Intl-West Monroe	Paper Products	800
Griggs Enterprises, Inc.- McDonald's	Fast Food Restaurant	433
Guest House at Springlake, LLC	Nursing Home	146
Halliburton Energy Services	Oil field services	587
Hardware Distribution Warehouses, Inc.	Wholesale Hardware Distributor	139
Harrah's Horseshoe Casino & Hotel		
Harrah's Louisiana Downs	Gaming Casino & Hotel	2,000
Harrison Company, LLC	Wholesale Food Distributor	138
HealthSouth Specialty Hospital of North LA	Health Care - Long Term Care	275
Heritage Manor South	Health Care - Long Term Care	140
Highland Clinic,		
A Professional Medical Corporation	Health Care	340
Hixson Autoplex of Monroe Inc	Automotive Dealership	100
Holmes Auto Group Companies	Automotive Dealership	165
Holy Angels Residential Facility	Residential Facility	311
Home Depot - Bert Kouns	Home Improvement Center	130
Home Depot - Bossier City	Home Improvement Center	130
Home Depot - Monroe	Home Improvement Center	100
Home Depot - Pines Road	Home Improvement Center	150
Homer Memorial Hospital	Health Care	267
House of Raeford Farms LLC		
Raeford Farms of Louisiana	Poultry Processing	800
IHS of Pierremont	Nursing Home	175
Industrial Insul Group LLC		
Pabco Insulation Division	Adhesive manufacturer	140
Integrated Technical Products	Engineering Services	130
International Paper / Industrial Packaging Div	Wood Product Mfg	520
International Paper-		
Natchitoches i-level Lumber Technologies	Wood Product Mfg	256

## Major Employers in Alphabetical Order

Company Name	Type of Business	No. of Employees
International Paper/Container Division	Wood Product Mfg	161
International Paper-Red River Mill	Wood Product Mfg	331
Interstate Brands Corp	Manufacturer/Breads	275
Ivan Smith Furniture	Retail - Furniture	284
Jackson Parish School Board	School System	360
James Machine Works Inc	Metal Product Mfg	176
JC Penney - Bossier City	Retail	116
JC Penney - Monroe	Retail	150
JC Penney - Youree	Retail	185
JDS Restaurants, Inc. (Taco Bell)	Fast Food Restaurant	289
Kansas City Southern Railway Company	Rail Service	668
Kenyan Enterprises Inc. (Piggly Wiggly & Save-A-Lot)	Grocery	408
Kilpatrick Life Insurance Company	Insurance	200
Kllm Transport Services Inc	Transportation	160
Kmart Corp	Dept Stores Discount	104
Koch Industries Inc	Chemicals Manufacturer	100
Kroger Food Stores	Grocery	370
KTBS, Inc.	Television Station	116
Landmark of Shreveport	Nursing Home	115
Leslie Lakes Retirement Center	Retirement Center	125
Libbey Glass, Inc.	Glassware manufacturer	968
LifeCare Hospitals, Inc.	Health Care	370
LifeShare Blood Centers	Blood Center - Regional Non-profit	170
Lincoln Parish School Board	School System	963
Live Oak Retirement Community	Health Care - Long Term Care	130
Louisiana Association for the Blind	Paper Products	125
Louisiana Coca-Cola Bottling-Monroe	Bottling Company	180
Louisiana Lift & Equipment Inc.	Industrial Machinery	117
Louisiana Plastic Converting	Refuse System	121
Louisiana School for Math, Science, and the Arts	Education	188
Louisiana State University Shreveport	Education	546
Louisiana Tech University	Education	1,400
Louisiana United Methodist Children's Home	Residential Facility	392
Lowe's Home Center - Airline	Home Improvement Center	140
Lowe's Home Center - Alkay	Home Improvement Center	150
Lowe's Home Center - Ruston	Home Improvement Center	140
Lowe's Home Center - Youree	Home Improvement Center	167
Lowe's Home Centers - Monroe	Home Improvement Center	170
LSU Health Sciences Center	Health Care	6,094
M L Smith, Jr Inc	Masonry/Stone Contractor	100
Madden Contracting Company, Inc.	Contractor	115
Mariner Health Care Inc	Nursing and/or Retirement Home	140
Martco Limited Partnership	Wood Product Mfg	630
McElroy Metal, Inc.	Roofing	200
McInnis Brothers Construction, Inc.	Contractor	160
Meadowview Health and Rehab Center	Nursing Home	134

## Major Employers in Alphabetical Order

Company Name	Type of Business	No. of Employees
Metro Aviation Inc	Aircraft Repair Service	137
MINACT Inc	Education	134
Minden Medical Center	Health Care	513
Monroe Manufacturing Inc	Manufacturer/plastic bottles	300
Moore's Retread & Tire of the Ark-La-Tex, Inc. dba Moore's Goodyear	Tires Sales & Service	131
Morehouse General Hospital Inc	Health Care	295
Morehouse Parish School Board	School System	507
Morgan Automotive Group	Automotive Dealership	142
Natchitoches Parish School Board	School System	823
Natchitoches Regional Medical Center	Health Care	575
National Mail-It Inc	Direct Mail Advertising Services	110
Newman Investments (Church's Chicken / Popeye's Chicken)	Fast Food Restaurant	372
North Caddo Medical Center	Health Care	181
Northern Louisiana Medical Center	Health Care	535
Northwest Supports & Services Center	Health Care - Residential Facility	414
Northwestern State University	Education	912
Nurse Care of Shreveport	Nursing Home	205
Ouachita Independent Bank	Banking	104
Ouachita Parish School Board	School System	3015
Overton Brooks VA Medical Center	Health Care	1,533
P & S Surgical Hospital	Health Care	150
P S O Inc./ Broyles Group	Convenience Store	300
Parish of Natchitoches	Government	232
People Centered Support Services	Job Training	160
Petro PSCLP	Truck Stop	200
Pilgrim Manor Guest Care	Nursing Home	133
Pilgrim's Pride - Natchitoches	Poultry Hatchery	702
Pizza Hut International	Fast Food Restaurant	301
Plantation Management Corp	Nursing and/or Retirement Home	100
Plymouth Tube Co	Metal Product Mfg	100
Porter's of LA., LLC	Dry Cleaning	165
Posado's Mexican Restaurants Shreveport/Bossier	Restaurant	105
Printpack inc.	Flexible Packaging	180
Priority Staffing Inc	Employment Agency	314
Progressive Bank	Banking	125
Promise Specialty Hospital of Shreveport	Health Care - Long Term Care	322
Red Ball Oxygen Company, Inc.	Chemicals Manufacturer	129
Red River Center Corp	Nursing Home	100
Red River Motor Company	Automotive Dealership	118
Red River Parish School Board	School System	267
Regions Bank - Shreveport	Banking	250
Republic Contractors Inc	Plumbing/Heat/Ac Contractor	178
Reynolds Industrial Contractors, Inc.	Fabricated Metal Products	120

## Major Employers in Alphabetical Order

Company Name	Type of Business	No. of Employees
Roof Masters of N America LLC	Roofing	100
Rosbottom Interests	Gaming, Real Estate, Oil & Gas	419
Rose View Nursing Center	Nursing Home	110
Roundtree Automotive Group, LLC	Automotive Dealership	400
RPM (Domino's) Pizza	Fast Food Restaurant	214
Ryan Chevrolet, Subaru Inc	Automotive Dealership	110
Ryan Mitsubishi	Automotive Dealership	150
Ryan's Restaurant Group Inc	Restaurant	100
Sabine Medical Center	Health Care	185
Sabine Parish School Board	School System	425
Saint Gobain Container Company	Glassware manufacturer	350
Sam's Club - Shreveport	Wholesale Club	192
Sam's Town Hotel & Casino Shreveport	Gaming Casino & Hotel	1,265
SCC Hodges, Inc	Paper Products	706
Schlumberger Technology Corp	Well logging service	260
Sears Roebuck & Company Shreveport & Bossier City	Retail	110
Sears, Roebuck & Co - Monroe	Retail	300
Securitas Security Services	Security Guard Service	165
Securitas USA	Security Guard Service	300
Shaw Alloy Piping Products Co., Inc.	Fabricated Metal Products	160
Shaw Process Fabricators Inc	Fabricated Metal Products	154
Shreve Memorial Library	Public Library	163
Shreveport Transit Management, Inc.	Public Transit Operations	131
Shriners Hospitals for Children	Health Care	194
Sol's Pipe & Steel Inc	Metal Product Mfg	103
Southeast Foods Inc	Grocery	212
Southeast Restaurant Inc, dba KFC	Fast Food Restaurant	243
Southern University at Shreveport	Education	344
Springhill Medical Center	Health Care	232
St Francis Medical Center	Health Care	1,671
State of Louisiana - Dept. of Civil Service	Government	18,873
Summerlin Lane Nursing Homes	Nursing and/or Retirement Home	100
Target Corp - Monroe	Retail	200
Target Store - Shreveport	Retail	340
Ternium USA Inc	Steel Work Mfg	130
Texas Roadhouse of Bossier City LLC	Restaurant	102
The Arc of Caddo-Bossier	Non Profit Organization	800
The Glen Retirement System	Health Care - Long Term Care	224
The Guest House, LLC	Nursing Home	150
The Times-Shreveport	Publishing	248
Thrifty Liquor Stores	Retail	135
Town & Country Nursing Center, LLC, dba Town & Country Health & Rehab	Skilled Nursing Care Facility	150
Trane Company	Air Conditioning Components	260
U. L. Coleman Properties Ltd.	Property Management	135

## Major Employers in Alphabetical Order

Company Name	Type of Business	No. of Employees
U. S. Postal Service	Postal Service	984
U.S. Support Company	Call Center	1,618
Union General Hospital	Health Care	140
Union Pacific Railroad Company	Rail Service	182
Union Parish School Board	School System	460
United Bilt Homes Inc.	Construction - Home	150
United Parcel Service	Air Freight	220
University of Louisiana At Monroe	Education	1,206
UOP, LLC	Chemicals Manufacturer	159
Vinson Guard Service Inc	Detective/Armored Car Services	175
Virginia Hall Nursing Home Inc	Skilled Nursing Care Facility	120
Voith Paper Fabrics	Textile Mill	100
Voith Paper Rolls South Inc	Textile Mills	100
Volunteers of America of North Louisiana	Non Profit Organization	495
Wal-Mart Stores Inc - Bastrop	Retail	275
Wal-Mart Stores Inc - Farmerville	Retail	165
Wal-Mart Stores Inc - Jonesboro	Retail	200
Wal-Mart Stores Inc - Mansfield	Retail	187
Wal-Mart Stores Inc - Monroe	Retail	200
Wal-Mart Stores Inc - Monroe	Retail	412
Wal-Mart Stores Inc. - West Monroe	Retail	500
Wal-Mart Stores, Inc. - Many	Retail	125
Wal-Mart Supercenter - Airline Drive	Retail	500
Wal-Mart Supercenter - E. Bert Kouns	Retail	500
Wal-Mart Supercenter - Mansfield Rd	Retail	450
Wal-Mart Supercenter - Minden	Retail	415
Wal-Mart Supercenter - Natchitoches	Retail	382
Wal-Mart Supercenter - Ruston	Retail	500
Wal-Mart Supercenter - Shreve City	Retail	520
Wal-Mart Supercenter - Westport Avenue	Retail	435
Webster Parish School Board	School System	985
Wendy's Restaurants	Fast Food Restaurant	252
West Monroe Guest House	Nursing and/or Retirement Home	130
Western Development Group Inc	Real Estate Agent/Manager	188
Weyerhaeuser Company - Arcadia	Wood Product Mfg	126
Weyerhaeuser Company - Zwolle Sawmill	Wood Product Mfg	250
Williamson Industries Inc	Building Materials	146
Willis Knighton Health System	Health Care	5,490
Yokem Motors Inc dba Yokem Toyota, dba Yokem Scion	Automotive Dealership	121



**Major Employers**

**By Parish,**

**then City,**

**then Company**

**with detail**



# Major Employers

---

## **Parish - Bienville**

### **City - Arcadia**

#### **Arcadia Nursing & Rehab**

660 Factory Outlet Mall Dr  
Arcadia, LA 71001  
(318) 263-2025 Employment: 120  
Skilled Nursing Care Facility

#### **Baptist Retirement Center of**

1355 6th St  
Arcadia, LA 71001  
(318) 263-9581 Employment: 130  
Nursing Home

#### **Bienville Parish School Board**

1956 First Street  
Arcadia, LA 71001  
(318) 263-9416 Employment: 400  
School System

#### **Graphic Packaging Intl**

PO Box 747  
Arcadia, LA 71001  
(318) 263-9503 Employment: 120  
Shipping Bag Manufacturer

#### **House of Raeford Farms LLC**

**Raeford Farms of Louisiana**  
P O Box 707  
Arcadia, LA 71001  
(318) 263-9004 Employment: 800  
Poultry Processing

#### **Leslie Lakes Retirement Center**

1355 Sixth St  
Arcadia, LA 71001  
(318) 263-9581 Employment: 125  
Retirement Center

## **Parish - Bossier**

### **City - BAFB**

#### **Barksdale Air Force Base**

109 Barksdale Blvd West  
BAFB, LA 71110  
(318) 456-3066 Employment: 9,018  
Military

### **City - Benton**

#### **Bossier Parish School Board**

P O Box 2000  
Benton, LA 71006  
(318) 549-5000 Employment: 2,807  
School System

## **City - Bossier City**

### **Albertson's Food & Drug Stores - Bossier**

**City**  
3121 E Texas St  
Bossier City, LA 71111  
(318) 742-9971 Employment: 105  
Grocery

#### **Barksdale Federal Credit Union**

2701 Village Lane  
Bossier City, LA 71112  
(318) 746-4773 Employment: 250  
Banking-Credit Union

#### **Bass Pro Shop**

100 Bass Pro Drive  
Bossier City, LA 71111  
(318) 549-8800 Employment: 235  
Retail

#### **BJ Services Co**

4920 Shed Rd  
Bossier City, LA 71111  
(318) 747-2990 Employment: 166  
Oil Field Services

#### **Boomtown Casino**

300 Riverside Drive  
Bossier City, LA 71111  
(318) 746-0711 Employment: 780  
Gaming Casino & Hotel

#### **Bossier Parish Community College**

6220 East Texas St.  
Bossier City, LA 71111  
(318) 678-6000 Employment: 553  
Education

#### **Budget PrePay, Inc.**

1325 Barksdale Blvd  
Bossier City, LA 71111  
(318) 671-5000 Employment: 166  
Phone Services

#### **Cellxion, LLC**

5031 Hazel Jones Road  
Bossier City, LA 71111  
(318) 213-2816 Employment: 400  
Com Towers/Concrete Shelters

## **City of Bossier City**

620 Benton Road  
Bossier City, LA 71111  
(318) 741-8800 Employment: 836  
Government

#### **Cornerstone Hospital of Bossier City**

4900 Medical Drive  
Bossier City, LA 71112  
(318) 747-9500 Employment: 146  
Health Care

#### **Diamond Jack's Casino Resort**

P. O. Box 5637  
Bossier City, LA 71171  
(318) 678-7777 Employment: 963  
Gaming Casino & Hotel

#### **Dillard's Department Store - Bossier City**

Pierre Bossier Mall, 2950 E. Texas St.  
Bossier City, LA 71111  
(318) 747-5610 Employment: 151  
Retail

#### **Gordon, Inc.**

5023 Hazel Jones Road  
Bossier City, LA 71111  
(318) 747-8954 Employment: 115  
Building Materials

#### **Halliburton Energy Services**

4720 Industrial Dr Ext  
Bossier City, LA 71112  
(800) 654-6926 Employment: 587  
Oil field services

#### **Harrah's Horseshoe Casino & Hotel/ Har- rah's Louisiana Downs**

711 Horseshoe Blvd.  
Bossier City, LA 71111  
(318) 742-0711 Employment: 2,000  
Gaming Casino & Hotel

#### **Harrison Company, LLC**

4801 Viking Drive  
Bossier City, LA 71111  
(318) 747-0700 Employment: 138  
Wholesale Food Distributor

# Major Employers

## Parish - Bossier (cont'd) City - Bossier City (cont'd)

### Home Depot - Bossier City

2800 Airline Drive  
Bossier City, LA 71111  
(318) 752-3601 Employment: 130  
Home Improvement Center

### JC Penney - E Texas

2950 E. Texas  
Bossier City, LA 71111  
(318) 747-6600 Employment: 116  
Retail

### Kmart Corp

3045 E Texas St  
Bossier City, LA 71111  
(318) 742-6811 Employment: 104  
Dept Stores Discount

### Lowe's Home Center - Airline

2360 Airline Drive  
Bossier City, LA 71111  
(318) 655-9038 Employment: 140  
Home Improvement Center

### McElroy Metal, Inc.

1500 Hamilton Rd  
Bossier City, LA 71111  
(318) 747-8000 Employment: 200  
Roofing

### Northwest Supports & Services Center

5401 Shed Road  
Bossier City, LA 71111  
(318) 742-6220 Employment: 414  
Health Care - Residential Facility

### Pilgrim Manor Guest Care

1524 Doctors Drive  
Bossier City, LA 71111  
(318) 742-1623 Employment: 133  
Nursing Home

### Porter's of LA., LLC

512 Benton Road  
Bossier City, LA 71111  
(318) 742-1097 Employment: 165  
Dry Cleaning

### Red River Center Corp

4820 Medical Dr  
Bossier City, LA 71112  
(318) 747-1857 Employment: 100  
Nursing Home

### Red River Motor Company

P.O. Box 5696  
Bossier City, LA 71171  
(318) 549-7600 Employment: 118  
Automotive Dealership

### Schlumberger Technology Corp

412 Hamilton Rd  
Bossier City, LA 71111  
(318) 742-0321 Employment: 260  
Well logging service

### Texas Roadhouse of Bossier City LLC

1005A Gould Dr  
Bossier City, LA 71111  
(318) 746-7122 Employment: 102  
Restaurant

### Thrifty Liquor Stores

3238 Barksdale Blvd.  
Bossier City, LA 71112  
(318) 742-3240 Employment: 135  
Retail

### Wal-Mart Supercenter - Airline Drive

2536 Airline Dr  
Bossier City, LA 71111  
(318) 747-0173 Employment: 500  
Retail

## City - Houghton

### Evergreen Presbyterian Ministries, Inc

2101 Highway 80  
Houghton, LA 71037  
(318) 949-5500 Employment: 329  
Res Care Services Ind/Family

## Parish - Caddo City - Shreveport

### AEP Southwestern Electric Power Com- pany

416 Travis St  
Shreveport, LA 71101  
(318) 673-3789 Employment: 687  
Electrical Power

### AFS Logistics LLC

330 Marshall St. Suite 400  
Shreveport, LA 71101  
(318) 798-2111 Employment: 132  
Logistics Management

### Albertson's Food & Drug Stores - Shreve- port

105 E. Southfield Road  
Shreveport, LA 71105  
(318) 869-1646 Employment: 113  
Grocery

### Alpha Nursing Services Inc

820 Jordan St Ste 308  
Shreveport, LA 71101  
(318) 222-1070 Employment: 130  
Nurse Staffing Employment Agency

### ALSCO

5000 Hollywood Ave.  
Shreveport, LA 71109  
(318) 636-0404 Employment: 120  
Linen Supply Services

### Apple Arkansas Inc dba Applebee's

9088 Mansfield Rd  
Shreveport, LA 71118  
(318) 688-7014 Employment: 145  
Restaurant

### Ark-La-Tex Cardiology

PO Box 51008  
Shreveport, LA 71135  
(318) 798-9400 Employment: 134  
Health Care

### Best Buy Company

7080 Youree Drive  
Shreveport, LA 71105  
(318) 524-2876 Employment: 199  
Retail

### Brentwood Behavioral Health System

1006 Highland Avenue  
Shreveport, LA 71101  
(318) 678-7500 Employment: 423  
Health Care

# Major Employers

---

## **Busada Industries Inc**

PO Box 36949  
Shreveport, LA 71133  
(318) 636-6666 Employment: 100  
Crude Petroleum Production

## **Caddo Parish Commission**

505 Travis St., Ste 840  
Shreveport, LA 71101  
(318) 226-6906 Employment: 481  
Government

## **Caddo Parish School Board**

1961 Midway Avenue  
Shreveport, LA 71130  
(318) 603-6300 Employment: 6,587  
School System

## **Caddo Parish Sheriff's Office**

505 Travis St, 7th Floor  
Shreveport, LA 71101  
(318) 681-0812 Employment: 733  
Public Service

## **Calumet Shreveport Lubricants & Waxes**

**LLC**  
3333 Midway Ave  
Shreveport, LA 71109  
(318) 636-2711 Employment: 130  
Petroleum Products

## **Capital One**

333 Travis St  
Shreveport, LA 71101  
(318) 674-3700 Employment: 234  
Banking

## **Centenary College of Louisiana**

2911 Centenary Blvd  
Shreveport, LA 71104  
(318) 869-5799 Employment: 306  
Education

## **CenturyTel**

359 Bert Kouns  
Shreveport, LA 71106  
(318) 683-2019 Employment: 371  
Call Center

## **CertainTeed**

620 Aero Drive  
Shreveport, LA 71107  
(318) 677-2700 Employment: 100  
Roofing

## **Chase**

400 Texas Street  
Shreveport, LA 71101  
(318) 226-2345 Employment: 237  
Banking

## **Christus Schumpert Health System**

One St. Mary Place  
Shreveport, LA 71101  
(318) 681-4500 Employment: 2,018  
Health Care

## **City of Shreveport**

505 Travis, Suite 530  
Shreveport, LA 71101  
(318) 673-5150 Employment: 2,691  
Government

## **Clubcorp USA Inc**

200 Southern Trace Pkwy  
Shreveport, LA 71106  
(318) 798-8300 Employment: 130  
Membership Sport/Recreation Club

## **Coca-Cola Bottling Company of Shreve- port**

305 Stoner Avenue  
Shreveport, LA 71101  
(318) 429-0200 Employment: 150  
Bottling Company

## **Conco Food Service**

524 W. 61st Street  
Shreveport, LA 71106  
(318) 869-3061 Employment: 150  
Food Service

## **Courtesy Chevrolet, Inc. dba Chevyland**

7500 Youree Drive  
Shreveport, LA 71105  
(318) 425-3471 Employment: 125  
Automotive Dealership

## **CVS/Pharmacy**

6935 Pines Rd.  
Shreveport, LA 71129  
(318) 688-7912 Employment: 443  
Drug Store

## **Deep South Equipment Company**

6851 Greenwood Rd  
Shreveport, LA 71119  
(318) 621-9000 Employment: 165  
Hyster Fork Lifts

## **Dillard's Department Store - Shreveport**

Mall St. Vincent, 2601 Southern  
Shreveport, LA 71104  
(318) 226-9565 Employment: 176  
Retail

## **Doctors Hospital**

1130 Louisiana Avenue  
Shreveport, LA 71101  
(318) 678-4447 Employment: 115  
Health Care

## **Eagle Distributing of Shreveport**

900 W. 62nd Street  
Shreveport, LA 71106  
(318) 868-2708 Employment: 127  
Beverage Distribution

## **Eldorado Resort Casino**

451 Clyde Fant Parkway  
Shreveport, LA 71101  
(318) 220-0711 Employment: 1,400  
Gaming Casino & Hotel

## **Fairfield Property Management**

P. O. Box 1117  
Shreveport, LA 71163  
(318) 227-8697 Employment: 130  
Property Management

## **FitzGerald Contractors, LLC**

P. O. Box 6600  
Shreveport, LA 71136  
(318) 869-3262 Employment: 134  
Contractor - Mechanical

## **Foremost Dairy**

5415 Interstate Dr.  
Shreveport, LA 71109  
(318) 635-4311 Employment: 250  
Food Mfg - milk/juice distributor

## **Frymaster L.L.C.**

8700 Line Avenue  
Shreveport, LA 71106  
(318) 865-1711 Employment: 560  
Food Service Equipment Mfg

## **Garden Park Nursing & Rehab**

PO Box 6479  
Shreveport, LA 71136  
(318) 688-0961 Employment: 176  
Skilled Nursing Care Facility

# Major Employers

---

## **Parish - Caddo (cont'd)** **City - Shreveport (cont'd)**

### **Gateway Tire Co**

1551 Airport Drive  
Shreveport, LA 71107  
(318) 222-8415 Employment: 135  
Tires Sales & Service

### **Gehls, Inc. - McDonald's**

416 Travis St, Ste 804  
Shreveport, LA 71101  
(318) 221-6632 Employment: 243  
Fast Food Restaurant

### **GM Shreveport Operations**

7600 General Motors Blvd  
Shreveport, LA 71130  
(318) 683-9000 Employment: 900  
Truck Assembly

### **Goodwill Industries of North Louisiana**

800 W. 70th Street  
Shreveport, LA 71106  
(318) 869-2575 Employment: 478  
Non Profit Organization

### **Gorman Group/Tango Transport, Inc.**

6009 Financial Plaza  
Shreveport, LA 71129  
(318) 683-6639 Employment: 925  
Transportation

### **Griggs Enterprises, Inc.- McDonald's**

330 Marshall St. Suite 711  
Shreveport, LA 71106  
(318) 424-9748 Employment: 433  
Fast Food Restaurant

### **Guest House at Springlake, LLC**

8622 Line Avenue  
Shreveport, LA 71106  
(318) 868-4126 Employment: 146  
Nursing Home

### **Hardware Distribution Warehouses, Inc.**

6900 Woolworth Rd  
Shreveport, LA 71129  
(318) 686-8527 Employment: 139  
Wholesale Hardware Distributor

### **Heritage Manor South**

9712 Mansfield Road  
Shreveport, LA 71118  
(318) 687-2080 Employment: 140  
Health Care - Long Term Care

### **Highland Clinic, A Professional Medical Corporation**

1455 E. Bert Kouns  
Shreveport, LA 71105  
(318) 798-4500 Employment: 340  
Health Care

### **Holmes Auto Group Companies**

P O Box 52417  
Shreveport, LA 71135  
(318) 212-1200 Employment: 165  
Automotive Dealership

### **Holy Angels Residential Facility**

10450 Ellerbe Road  
Shreveport, LA 71106  
(318) 797-8500 Employment: 311  
Residential Facility

### **Home Depot - Bert Kouns**

110 E. Bert Kouns Industrial Loop  
Shreveport, LA 71106  
(318) 861-9200 Employment: 130  
Home Improvement Center

### **Home Depot - Pines Road**

6900 Pines Rd  
Shreveport, LA 71129  
(318) 686-3054 Employment: 150  
Home Improvement Center

### **IHS of Pierremont**

725 Mitchell Lane  
Shreveport, LA 71106  
(318) 868-2789 Employment: 175  
Nursing Home

### **Integrated Technical Products**

117 Joseph  
Shreveport, LA 71107  
(318) 675-1772 Employment: 130  
Engineering Services

### **Ivan Smith Furniture**

5434 Technology Dr.  
Shreveport, LA 71129  
(318) 688-1335 Employment: 284  
Retail - Furniture

### **JC Penney - Youree**

7450 Youree Dr  
Shreveport, LA 71105  
(318) 797-5611 Employment: 185  
Retail

### **JDS Restaurants, Inc. (Taco Bell)**

PO Box 7157  
Shreveport, LA 71137  
(318) 226-8500 Employment: 289  
Fast Food Restaurant

### **Kansas City Southern Railway Company**

4601 Shreveport Blanchard Hwy.  
Shreveport, LA 71107  
(318) 676-6000 Employment: 668  
Rail Service

### **Kilpatrick Life Insurance Company**

1818 Marshall Street  
Shreveport, LA 71101  
(318) 222-0555 Employment: 200  
Insurance

### **Kroger Food Stores**

6652 Youree Drive  
Shreveport, LA 71105  
(318) 795-9944 Employment: 370  
Grocery

### **KTBS, Inc.**

312 E. Kings Highway  
Shreveport, LA 71104  
(318) 861-5800 Employment: 116  
Television Station

### **Landmark of Shreveport**

9105 Baird Road  
Shreveport, LA 71118  
(318) 688-6691 Employment: 115  
Nursing Home

### **Libbey Glass, Inc.**

4302 Jewella Ave  
Shreveport, LA 71109  
(318) 621-0280 Employment: 968  
Glassware manufacturer

### **LifeCare Hospitals, Inc.**

9320 Linwood Avenue  
Shreveport, LA 71106  
(318) 688-8504 Employment: 370  
Health Care

# Major Employers

---

## **LifeShare Blood Centers**

8910 Linwood Avenue  
Shreveport, LA 71106  
(318) 222-7770 Employment: 170  
Blood Center - Regional Non-profit

## **Live Oak Retirement Community**

600 E. Flournoy-Lucas Road  
Shreveport, LA 71115  
(318) 797-1900 Employment: 130  
Health Care - Long Term Care

## **Louisiana Association for the Blind**

1750 Claiborne Avenue  
Shreveport, LA 71103  
(318) 635-6471 Employment: 125  
Paper Products

## **Louisiana Lift & Equipment Inc.**

6847 Greenwood Road  
Shreveport, LA 71119  
(318) 631-5100 Employment: 117  
Industrial Machinery

## **Louisiana State University Shreveport**

One University Place  
Shreveport, LA 71115  
(318) 797-5000 Employment: 546  
Education

## **Lowe's Home Center - Alkay**

2710 Alkay Drive  
Shreveport, LA 71118  
(318) 683-3000 Employment: 150  
Home Improvement Center

## **Lowe's Home Center - Youree**

7301 Youree Drive  
Shreveport, LA 71105  
(318) 524-3445 Employment: 167  
Home Improvement Center

## **LSU Health Sciences Center**

1501 Kings Highway  
Shreveport, LA 71130  
(318) 675-5610 Employment: 6,094  
Health Care

## **Metro Aviation Inc**

P O Box 7008  
Shreveport, LA 71137  
(318) 222-5529 Employment: 137  
Aircraft Repair Service

## **MINACT Inc**

2815 Lillian Street  
Shreveport, LA 71109  
(318) 629-7589 Employment: 134  
Education

## **Moore's Retread & Tire of the Ark-La-Tex, Inc. dba Moore's Goodyear**

8901 Linwood Avenue  
Shreveport, LA 71106  
(318) 687-7777 Employment: 131  
Tires Sales & Service

## **Morgan Automotive Group**

P.O. Box 6179  
Shreveport, LA 71136  
(318) 798-1600 Employment: 142  
Automotive Dealership

## **National Mail-It Inc**

6003 Fincl Plz Ste 201  
Shreveport, LA 71129  
(318) 683-0093 Employment: 110  
Direct Mail Advertising Services

## **Newman Investments (Church's Chicken / Popeye's Chicken)**

3427 Youree Drive  
Shreveport, LA 71105  
(956) 722-8021 Employment: 372  
Fast Food Restaurant

## **Nurse Care of Shreveport**

1736 Irving Place  
Shreveport, LA 71101  
(318) 221-1983 Employment: 205  
Nursing Home

## **Overton Brooks VA Medical Center**

510 E Stoner Ave  
Shreveport, LA 71101  
(318) 221-8411 Employment: 1,533  
Health Care

## **P S O Inc./ Broyles Group**

909 W. 70th Street  
Shreveport, LA 71106  
(318) 868-4458 Employment: 300  
Convenience Store

## **Petro PSCLP**

6918 W. Bert Kouns Industrial Loop  
Shreveport, LA 71129  
(318) 686-6139 Employment: 200  
Truck Stop

## **Posado's Mexican Restaurants - Shreve- port/Bossier**

1355 E. Bert Kouns Industrial Loop  
Shreveport, LA 71105  
(318) 524-2000 Employment: 105  
Restaurant

## **Printpack inc.**

210 Kansas City Ave.  
Shreveport, LA 71107  
(318) 226-8661 Employment: 180  
Flexible Packaging

## **Priority Staffing Inc**

8660 Fern Ave Ste 160  
Shreveport, LA 71105  
(318) 865-0088 Employment: 314  
Employment Agency

## **Promise Specialty Hospital of Shreveport**

1800 Irving Place  
Shreveport, LA 71101  
(318) 934-0485 Employment: 322  
Health Care - Long Term Care

## **Red Ball Oxygen Company, Inc.**

P. O. Box 7316  
Shreveport, LA 71137  
(318) 425-3211 Employment: 129  
Chemicals Manufacturer

## **Regions Bank**

333 Texas Street  
Shreveport, LA 71101  
(318) 429-1000 Employment: 250  
Banking

## **Republic Contractors Inc**

PO Box 18836  
Shreveport, LA 71138  
(318) 688-8282 Employment: 178  
Plumbing/Heat/Ac Contractor

## **Rosbottom Interests**

2640 Youree Drive  
Shreveport, LA 71104  
(318) 219-1212 Employment: 419  
Gaming, Real Estate, Oil & Gas

## **Rose View Nursing Center**

3405 Mansfield Road  
Shreveport, LA 71103  
(318) 222-3100 Employment: 110  
Nursing Home

# Major Employers

---

## **Parish - Caddo (cont'd)** **City - Shreveport (cont'd)**

### **Roundtree Automotive Group, LLC**

P O Box 52008  
Shreveport, LA 71135  
(318) 798-6500 Employment: 400  
Automotive Dealership

### **Sam's Club**

7400 Youree Drive  
Shreveport, LA 71105  
(318) 798-2043 Employment: 192  
Wholesale Club

### **Sam's Town Hotel & Casino Shreveport**

315 Clyde Fant Parkway  
Shreveport, LA 71101  
(318) 424-7777 Employment: 1,265  
Gaming Casino & Hotel

### **Securitas USA**

1324 N Hearne Ave Ste 160  
Shreveport, LA 71107  
(318) 429-0708 Employment: 300  
Security Guard Service

### **Shaw Alloy Piping Products Co., Inc.**

P O Box 7368  
Shreveport, LA 71137  
(318) 674-9860 Employment: 160  
Fabricated Metal Products

### **Shreve Memorial Library**

424 Texas Street  
Shreveport, LA 71120  
(318) 226-5871 Employment: 163  
Public Library

### **Shreveport Transit Management, Inc.**

1115 Jack Wells Blvd.  
Shreveport, LA 71107  
(318) 673-7400 Employment: 131  
Public Transit Operations

### **Shriners Hospitals for Children**

3100 Samford Avenue  
Shreveport, LA 71103  
(318) 226-3305 Employment: 194  
Health Care

### **Southern University at Shreveport**

3050 Martin Luther King, Jr. Drive  
Shreveport, LA 71107  
(318) 674-3300 Employment: 344  
Education

### **Target Store**

7110 Youree Drive  
Shreveport, LA 71105  
(318) 797-1190 Employment: 340  
Retail

### **Ternium USA Inc**

2500 Ron Bean Blvd  
Shreveport, LA 71115  
(318) 698-7500 Employment: 130  
Steel Work Mfg

### **The Arc of Caddo-Bossier**

351 Jordan St  
Shreveport, LA 71101  
(318) 425-8888 Employment: 800  
Non Profit Organization

### **The Glen Retirement System**

403 E. Flournoy Lucas Road  
Shreveport, LA 71115  
(318) 798-3500 Employment: 224  
Health Care - Long Term Care

### **The Guest House, LLC**

9225 Normandie Drive  
Shreveport, LA 71118  
(318) 687-0515 Employment: 150  
Nursing Home

### **The Times**

P. O. Box 30222  
Shreveport, LA 71130  
(318) 459-3200 Employment: 248  
Publishing

### **U. L. Coleman Properties Ltd.**

207 Milam Street, Suite C  
Shreveport, LA 71101  
(318) 221-0541 Employment: 135  
Property Management

### **U.S. Support Company**

5800 Bert Kouns Industrial Loop  
Shreveport, LA 71129  
(800) 731-4357 Employment: 1,618  
Call Center

### **Union Pacific Railroad Company**

6215 E. Jewella Avenue  
Shreveport, LA 71108  
(318) 636-6313 Employment: 182  
Rail Service

### **United Bilt Homes Inc.**

8500 Line Avenue  
Shreveport, LA 71106  
(318) 861-4572 Employment: 150  
Construction - Home

### **United Parcel Service**

1907 Jim Casey Drive  
Shreveport, LA 71103  
(318) 222-3269 Employment: 220  
Air Freight

### **UOP, LLC**

8725 Old Mooringsport Rd  
Shreveport, LA 71107  
(318) 929-3521 Employment: 159  
Chemicals Manufacturer

### **Vinson Guard Service Inc**

3010 Knight St Ste 170  
Shreveport, LA 71105  
(318) 865-8250 Employment: 175  
Detective/Armored Car Services

### **Virginia Hall Nursing Home Inc**

2715 Albert L Bicknell Dr  
Shreveport, LA 71103  
(318) 212-8200 Employment: 120  
Skilled Nursing Care Facility

### **Voith Paper Fabrics**

7133 W. Park Road  
Shreveport, LA 71129  
(318) 687-5485 Employment: 100  
Textile Mill

### **Volunteers of America of North Louisiana**

360 Jordan St  
Shreveport, LA 71101  
(318) 221-2669 Employment: 495  
Non Profit Organization

### **Wal-Mart Supercenter - E. Bert Kouns**

1645 E Bert Kouns Industrial Loop  
Shreveport, LA 71105  
(318) 797-5970 Employment: 500  
Retail

### **Wal-Mart Supercenter - Mansfield Rd**

9550 Mansfield Road  
Shreveport, LA 71118  
(318) 688-0538 Employment: 450  
Retail

# Major Employers

## **Wal-Mart Supercenter - Shreve City**

1125 Shreveport-Barksdale Hwy  
Shreveport, LA 71105  
(318) 861-9202 Employment: 520  
Retail

## **Wal-Mart Supercenter - Westport Avenue**

6235 Westport Avenue  
Shreveport, LA 71129  
(318) 688-7700 Employment: 435  
Retail

## **Western Development Group Inc**

8575 Fern Ave Ste 105  
Shreveport, LA 71105  
(318) 868-3600 Employment: 188  
Real Estate Agent/Manager

## **Willis Knighton Health System**

2600 Greenwood Rd  
Shreveport, LA 71103  
(318) 212-3000 Employment: 5,490  
Health Care

## **Yokem Motors Inc dba Yokem Toyota, dba Yokem Scion**

1199 E. Bert Kouns  
Shreveport, LA 71105  
(318) 798-3773 Employment: 121  
Automotive Dealership

## **Allen Millwork, Inc.**

6505 St. Vincent Avenue  
Shreveport, LA 71106  
(318) 868-6541 Employment: 110  
Building Materials

## **City - Vivian**

## **North Caddo Medical Center**

P. O. Box 792  
Vivian, LA 71082  
(318) 375-3235 Employment: 181  
Health Care

## **Parish - Claiborne City - Homer**

## **Berry Plastics**

4058 Highway 79  
Homer, LA 71040  
(318) 927-2531 Employment: 120  
Packaging materials

## **Claiborne Parish School Board**

500 N. 3rd. Street  
Homer, LA 71040  
(318) 927-6257 Employment: 140  
School System

## **David Wade Correctional Center - Louisi- ana Dept of Corrections**

670 Bell Hill Rd  
Homer, LA 71040  
(318) 927-0400 Employment: 403  
Corrections Facility - Male

## **Homer Memorial Hospital**

620 East College Dr  
Homer, LA 71040  
(318) 927-2024 Employment: 267  
Health Care

## **Parish - DeSoto City - Mansfield**

## **Dolet Hills Mining Venture**

377 Highway 522  
Mansfield, LA 71052  
(318) 872-6300 Employment: 200  
Lignite coal surface mining

## **Wal-Mart Stores Inc - Mansfield**

7292 Highway 509  
Mansfield, LA 71052  
(318) 872-5711 Employment: 187  
Retail

## **DeSoto Parish School Board**

201 Crosby Street  
Mansfield, LA 71052  
(318) 872-2836 Employment: 805  
School System

## **DeSoto Regional Health System**

207 Jefferson St.  
Mansfield, LA 71052  
(318) 872-4610 Employment: 292  
Health Care

## **International Paper / Industrial Packaging Division**

1202 Hwy 509  
Mansfield, LA 71052  
(318) 872-5100 Employment: 520  
Wood Product Mfg

## **Parish - Jackson City - Hodge**

## **SCC Hodges, Inc**

100 Mill St  
Hodge, LA 71247  
(318) 259-4421 Employment: 706  
Paper Products

## **City - Jonesboro**

## **Jackson Parish School Board**

315 Pershing Hwy  
Jonesboro, LA 71251  
(318) 259-4456 Employment: 360  
School System

## **Wal-Mart Stores Inc - Jonesboro**

184 Old Winnfield Rd  
Jonesboro, LA 71251  
(318) 259-4149 Employment: 200  
Retail

## **Parish - Lincoln City - Grambling**

## **Grambling State University**

100 Founder St  
Grambling, LA 71245  
(318) 247-3811 Employment: 805  
Education

## **Industrial Insul Group LLC**

## **Pabco Insulation Division**

276 Fiberboard Rd  
Grambling, LA 71245  
(318) 255-5766 Employment: 140  
Adhesive manufacturer

## **City - Ruston**

## **Aramark Services Inc - La Tech**

P O Box 3085  
Ruston, LA 71272  
(318) 257-2327 Employment: 180  
Food Service

## **Certicare Services of Ruston**

107 W Alabama Ave  
Ruston, LA 71270  
(318) 255-1077 Employment: 200  
Home Health Care Services

## **City of Ruston**

401 N Trenton St  
Ruston, LA 71270  
(318) 251-8621 Employment: 321  
Government

# Major Employers

## **Parish - Lincoln (cont'd)**

### **City - Ruston (cont'd)**

#### **Franke Consumer Products, Inc**

600 Franke Dr  
Ruston, LA 71270  
(318) 255-5600 Employment: 200  
Metal Product Mfg

#### **Genesis Energy/dba Davison Transport**

P O Box 310  
Ruston, LA 71273  
(318) 255-3850 Employment: 225  
Trucking

#### **HealthSouth Specialty Hospital of North**

##### **Louisiana**

1401 Ezell St  
Ruston, LA 71270  
(318) 251-3126 Employment: 275  
Health Care - Long Term Care

#### **Lincoln Parish School Board**

410 S Farmerville St  
Ruston, LA 71270  
(318) 255-1430 Employment: 963  
School System

#### **Louisiana Tech University**

P O Box 3173  
Ruston, LA 71272  
(318) 257-2235 Employment: 1,400  
Education

#### **Louisiana United Methodist Children's Home**

901 S Vienna St  
Ruston, LA 71270  
(318) 255-5020 Employment: 392  
Residential Facility

#### **Lowe's Home Center - Ruston**

809 Morrison Ln  
Ruston, LA 71270  
(318) 513-6516 Employment: 140  
Home Improvement Center

#### **M L Smith, Jr Inc**

2330 Highway 33  
Ruston, LA 71270  
(318) 255-4474 Employment: 100  
Masonry/Stone Contractor

#### **Northeast Supports & Services Center**

2776 Highway 150  
Ruston, LA 71270  
(318) 247-3721 Employment: 229  
Government

#### **Northern Louisiana Medical Center**

401 E Vaughn Ave  
Ruston, LA 71270  
(318) 254-2771 Employment: 535  
Health Care

#### **People Centered Support Services**

P O Box 1331  
Ruston, LA 71273  
(318) 255-9105 Employment: 160  
Job Training

#### **Saint Gobain Container Company**

P O Box 789  
Ruston, LA 71273  
(318) 247-8041 Employment: 350  
Glassware manufacturer

#### **Wal-Mart Supercenter - Ruston**

1201 N Service Rd East  
Ruston, LA 71270  
(318) 251-1168 Employment: 500  
Retail

## **City - Simsboro**

#### **Flakeboard**

486 Duraflake Rd  
Simsboro, LA 71275  
(318) 247-6923 Employment: 138  
Wood Product Mfg

#### **Weyerhaeuser Company - Arcadia**

130 Girl Scout Rd  
Simsboro, LA 71275  
(318) 263-2529 Employment: 126  
Wood Product Mfg

## **Parish - Morehouse**

### **City - Bastrop**

#### **Brookshire Grocery Co - Bastrop**

2211 E Madison Ave  
Bastrop, LA 71220  
(318) 283-0082 Employment: 120  
Grocery

#### **Cherry Ridge Guest Care LLC**

5980 Cherry Ridge Rd  
Bastrop, LA 71220  
(318) 281-6933 Employment: 120  
Nursing and/or Retirement Home

## **City of Bastrop**

202 E. Jefferson Ave  
Bastrop, LA 71220  
(318) 283-3301 Employment: 200  
Government

#### **Kllm Transport Services Inc**

4099 Naff Ave  
Bastrop, LA 71220  
(318) 281-3234 Employment: 160  
Transportation

#### **Morehouse General Hospital Inc**

PO Box 1060  
Bastrop, LA 71221  
(318) 283-3600 Employment: 295  
Health Care

#### **Morehouse Parish School Board**

P.O. Box 872  
Bastrop, LA 71220  
(318) 281-5784 Employment: 507  
School System

#### **Summerlin Lane Nursing Homes**

1408 Summerlin Ln  
Bastrop, LA 71220  
(318) 281-5188 Employment: 100  
Nursing and/or Retirement Home

#### **Wal-Mart Stores Inc - Bastrop**

6091 Hwy 165  
Bastrop, LA 71220  
(318) 281-9384 Employment: 275  
Retail

## **Parish - Natchitoches**

### **City - Campti**

#### **International Paper-Red River Mill**

4537 Highway 480  
Campti, LA 71411  
(318) 476-3392 Employment: 331  
Wood Product Mfg

### **City - Chopin**

#### **Martco Limited Partnership**

1695 Hwy 490  
Chopin, LA 71447  
(318) 379-2855 Employment: 630  
Wood Product Mfg

# Major Employers

## City - Natchitoches

### Alliance Compressors

100 Industrial Drive  
Natchitoches, LA 71457  
(318) 356-4500 Employment: 600  
Air Conditioning Components

### International Paper- Natchitoches i-level

#### Lumber Technologies

234 Industrial Ave  
Natchitoches, LA 71457  
(318) 357-1424 Employment: 256  
Wood Product Mfg

### Louisiana School for Math, Science, and the Arts

715 University Parkway  
Natchitoches, LA 71457  
(318) 357-3174 Employment: 188  
Education

### Natchitoches Parish School Board

P. O. Box 16  
Natchitoches, LA 71457  
(318) 352-2358 Employment: 823  
School System

### Natchitoches Regional Medical Center

501 Keyser Ave  
Natchitoches, LA 71457  
(318) 214-4200 Employment: 575  
Health Care

### Northwestern State University

350 Sam Sibley  
Natchitoches, LA 71497  
(318) 357-6011 Employment: 912  
Education

### Parish of Natchitoches

200 Church St  
Natchitoches, LA 71457  
(318) 352-2714 Employment: 232  
Government

### Pilgrim's Pride - Natchitoches

P O Box 1008  
Natchitoches, LA 71458  
(318) 352-9600 Employment: 702  
Poultry Hatchery

## Wal-Mart Supercenter - Natchitoches

925 Keyser Ave  
Natchitoches, LA 71457  
(318) 352-5607 Employment: 382  
Retail

## Parish - Ouachita

### City - Monroe

#### Belk Inc

4920 Millhaven Rd  
Monroe, LA 71203  
(318) 361-2213 Employment: 200  
Retail

#### Breck Construction Co Inc

PO Box 4747  
Monroe, LA 71211  
(318) 387-3300 Employment: 150  
Contractor

#### Care Solutions Inc

509 N 2nd St  
Monroe, LA 71201  
(318) 362-0036 Employment: 200  
Health Care

#### CenturyLink

100 Centurytel Dr.  
Monroe, LA 71203  
(318) 388-9000 Employment: 1470  
Phone Service

#### Chase

1500 N. 19th Street  
Monroe, LA 71201  
(318) 329-1495 Employment: 1800  
Banking

#### Christus Health

2301 Sterlington Rd  
Monroe, LA 71203  
(318) 323-3426 Employment: 140  
Nursing and/or Retirement Home

#### City of Monroe

400 Lea Joyner Expressway  
Monroe, LA 71210  
(318) 329-2200 Employment: 1150  
Government

#### Diamond B Construction Co LLC

5700 McCauthur St  
Monroe, LA 71202  
(318) 387-5854 Employment: 117  
Contractor

## Dillard's Inc

4610 Millhaven Rd  
Monroe, LA 71203  
(318) 323-8000 Employment: 200  
Retail

## DSD Community Connection Inc

1041 N 9th St  
Monroe, LA 71201  
(318) 651-0201 Employment: 150  
Health Care

## El Chico Restaurants of AR

4700 Millhaven Rd Ste 1330  
Monroe, LA 71203  
(318) 388-8831 Employment: 100  
Restaurant

## Gannett Co Inc

PO Box 1502  
Monroe, LA 71210  
(318) 322-5161 Employment: 220  
Publishing

## Garrett Manufacturing LLC

PO Box 6050  
Monroe, LA 71211  
(318) 338-3086 Employment: 100  
Distribution/Manufacturing

## Hixson Autoplex of Monroe Inc

1201 Louisville Ave  
Monroe, LA 71201  
(318) 388-3300 Employment: 100  
Automotive Dealership

## Home Depot USA Inc

3750 Millhaven Rd  
Monroe, LA 71203  
(318) 324-0220 Employment: 100  
Home Improvement Center

## Interstate Brands Corp

PO Box 1707  
Monroe, LA 71210  
(318) 388-2244 Employment: 275  
Manufacturer/Breads

## James Machine Works Inc

RR 1521 Adams St  
Monroe, LA 71201  
(318) 322-6104 Employment: 176  
Metal Product Mfg

# Major Employers

---

## **Parish - Ouachita (cont'd)** **City - Monroe (cont'd)**

### **JC Penney Corp Inc**

4761 Pecanland Mall Dr  
Monroe, LA 71203  
(318) 387-9530 Employment: 150  
Retail

### **Louisiana Coca-Cola Bottling**

254 Martinez Dr  
Monroe, LA 71203  
(318) 388-4900 Employment: 180  
Bottling Company

### **Lowe's Home Centers Inc**

4750 Frontage Rd  
Monroe, LA 71202  
(318) 388-5200 Employment: 170  
Home Improvement Center

### **Monroe Manufacturing Inc**

PO Box 4066  
Monroe, LA 71211  
(318) 388-4916 Employment: 300  
Manufacturer/plastic bottles

### **Quachita Independent Bank**

PO Box 14100  
Monroe, LA 71207  
(318) 338-3000 Employment: 104  
Banking

### **Quachita Parish School Board**

100 Bry Street  
Monroe, LA 71201  
(318) 388-2711 Employment: 3015  
School System

### **P & S Surgical Hospital**

PO Box 3187  
Monroe, LA 71210  
(318) 388-4040 Employment: 150  
Health Care

### **Plantation Management Corp**

3001 S Grand St  
Monroe, LA 71202  
(318) 388-3200 Employment: 100  
Nursing and/or Retirement Home

### **Progressive Bank**

PO Box 4053  
Monroe, LA 71211  
(318) 812-5220 Employment: 125  
Banking

### **Roof Masters of N America LLC**

357 Fontana Rd  
Monroe, LA 71203  
(318) 343-7771 Employment: 100  
Roofing

### **Ryan Chevrolet, Subaru Inc**

PO Box 2335  
Monroe, LA 71207  
(318) 387-2229 Employment: 110  
Automotive Dealership

### **Ryan Mitsubishi**

1101 Oliver Rd  
Monroe, LA 71201  
(318) 387-2200 Employment: 150  
Automotive Dealership

### **Ryan's Restaurant Group Inc**

2400 Louisville Ave  
Monroe, LA 71201  
(318) 324-8050 Employment: 100  
Restaurant

### **Sears, Roebuck & Co**

4800 Millhaven Rd  
Monroe, LA 71203  
(318) 361-4869 Employment: 300  
Retail

### **Securitas Security Services**

2410 Ferrand St Ste 1112  
Monroe, LA 71201  
(318) 325-9648 Employment: 165  
Security Guard Service

### **Sol's Pipe & Steel Inc**

PO Box 2407  
Monroe, LA 71207  
(318) 387-2242 Employment: 103  
Metal Product Mfg

### **Southeast Foods Inc**

P O Box 2230  
Monroe, LA 71207  
(318) 388-1884 Employment: 212  
Grocery

### **St Francis Medical Center**

309 Jackson St.  
Monroe, LA 71201  
(318) 966-4000 Employment: 1,671  
Health Care

### **Target Corp**

4103 Pecanland Mall Dr  
Monroe, LA 71203  
(318) 361-3781 Employment: 200  
Retail

### **University of Louisiana At Monroe**

700 University Ave  
Monroe, LA 71209  
(318) 342-1000 Employment: 1206  
Education

### **Wal-Mart Stores Inc - Monroe**

2701 Louisville Ave  
Monroe, LA 71201  
(318) 324-0016 Employment: 412  
Retail

### **Wal-Mart Stores Inc - Monroe**

5400 Frontage Rd  
Monroe, LA 71202  
(318) 345-5615 Employment: 200  
Retail

### **Williamson Industries Inc**

711 N 4th St  
Monroe, LA 71201  
(318) 387-1727 Employment: 146  
Building Materials

## **City - Sterlington**

### **Angus Chemical Co**

PO Box 1325  
Sterlington, LA 71280  
(318) 665-0010 Employment: 185  
Chemicals Manufacturer

### **Koch Industries Inc**

6310 Horseshoe Lake Rd  
Sterlington, LA 71280  
(318) 665-4451 Employment: 100  
Chemicals Manufacturer

## **City - West Monroe**

### **Brookshire Grocery Co - West Monroe**

2907 Cypress St  
West Monroe, LA 71291  
(318) 322-8665 Employment: 150  
Grocery

### **G & H Property Inc**

PO Box 639  
West Monroe, LA 71294  
(318) 322-2628 Employment: 100  
Fast Food Restaurant

# Major Employers

---

## **General Mills Inc**

725 Forty Oaks Farm Rd  
West Monroe, LA 71291  
(318) 396-0902 Employment: 100  
Manufactures flour mixes

## **Georgia-Pacific LLC**

PO Box 35806  
West Monroe, LA 71294  
(318) 387-4444 Employment: 215  
Paper Products

## **Glenwood Regional Medical Ctr**

3209 Cypress St  
West Monroe, LA 71291  
(318) 329-4770 Employment: 950  
Health Care

## **Graphic Packaging Intl**

PO Box 35800  
West Monroe, LA 71294  
(318) 362-2000 Employment: 800  
Paper Products

## **Louisiana Plastic Converting**

503 Downing Pines Rd  
West Monroe, LA 71292  
(318) 387-5490 Employment: 121  
Refuse System

## **Mariner Health Care Inc**

6198 Cypress St  
West Monroe, LA 71291  
(318) 396-5600 Employment: 140  
Nursing and/or Retirement Home

## **Plymouth Tube Co**

601 Grantham Ave  
West Monroe, LA 71292  
(318) 388-3360 Employment: 100  
Metal Product Mfg

## **Shaw Process Fabricators Inc**

800 New Natchitoches Rd  
West Monroe, LA 71292  
(318) 387-0212 Employment: 154  
Fabricated Metal Products

## **Voith Paper Rolls South Inc**

PO Box 785  
West Monroe, LA 71294  
(318) 387-1801 Employment: 100  
Textile Mills

## **Wal-Mart Stores Inc. - West Monroe**

1025 Glenwood Dr  
West Monroe, LA 71291  
(318) 322-0127 Employment: 500  
Retail

## **West Monroe Guest House**

1007 Glenwood Dr  
West Monroe, LA 71291  
(318) 387-3900 Employment: 130  
Nursing and/or Retirement Home

## **Parish - Red River**

### **City - Coushatta**

## **Christus Coushatta Health Care Center -**

### **Coushatta**

1635 Marvel St  
Coushatta, LA 71019  
(318) 932-2000 Employment: 175  
Health Care

## **Red River Parish School Board**

1922 Alonzo Street  
Coushatta, LA 71019  
(318) 932-4081 Employment: 267  
School System

## **Parish - Sabine**

### **City - Florien**

## **Boise Cascade LLC**

225 Studeman Dr  
Florien, LA 71429  
(318) 586-8200 Employment: 378  
Wood Product Mfg

## **Many**

## **Big Star Supermarket of Many Inc**

175 San Antonio Ave  
Many, LA 71449  
(318) 256-9256 Employment: 225  
Grocery

## **Sabine Medical Center**

240 Highland Dr  
Many, LA 71449  
(318) 256-5691 Employment: 185  
Health Care

## **Sabine Parish School Board**

695 Peterson Street  
Many, LA 71449  
(318) 256-9228 Employment: 425  
School System

## **Wal-Mart - Many 0876**

155 San Antonio Ave  
Many, LA 71449  
(318) 256-9207 Employment: 125  
Retail

## **City - Zwolle**

## **Weyerhaeuser Company - Zwolle Sawmill**

P O Box 158  
Zwolle, LA 71486  
(318) 645-6124 Employment: 250  
Wood Product Mfg

## **Parish - Union**

### **City - Farmerville**

## **Foster Farms**

6648 Hwy 15  
Farmerville, LA 71241  
(318) 368-4200 Employment: 650  
Poultry Processing

## **Union General Hospital**

PO Box 398  
Farmerville, LA 71241  
(318) 368-9751 Employment: 140  
Health Care

## **Union Parish School Board**

P.O. Box 308  
Farmerville, LA 71241  
(318) 368-9715 Employment: 460  
School System

## **Wal-Mart Stores Inc - Farmerville**

833 Sterlington Hwy  
Farmerville, LA 71241  
(318) 368-2535 Employment: 165  
Retail

## **Parish - Webster**

### **City - Minden**

## **City of Minden**

P. O. Box 580  
Minden, LA 71058  
(318) 377-2144 Employment: 213  
Government

## **Fleming Subway Restaurants, Inc.**

119 Homer Road  
Minden, LA 71055  
(318) 377-6665 Employment: 325  
Fast Food Restaurant

# Major Employers

## Parish - Webster (cont'd)

### City - Minden (cont'd)

#### Madden Contracting Company, Inc.

P.O. Box 856  
Minden, LA 71058  
(318) 377-0928 Employment: 115  
Contractor

#### McInnis Brothers Construction, Inc.

P.O. Box 610  
Minden, LA 71058  
(318) 377-6134 Employment: 160  
Contractor

#### Meadowview Health and Rehab Center

400 Meadowview Drive  
Minden, LA 71055  
(318) 377-1011 Employment: 134  
Nursing Home

#### Minden Medical Center

One Medical Plaza  
Minden, LA 71055  
(318) 371-5605 Employment: 513  
Health Care

#### Reynolds Industrial Contractors, Inc.

142 Old Shreveport Rd.  
Minden, LA 71055  
(318) 377-2289 Employment: 120  
Fabricated Metal Products

#### Town & Country Nursing Center, LLC, dba

#### Town & Country Health & Rehab

614 Weston Street  
Minden, LA 71055  
(318) 377-5148 Employment: 150  
Skilled Nursing Care Facility

#### Wal-Mart Supercenter - Minden

1379 Homer Road  
Minden, LA 71055  
(318) 371-9290 Employment: 415  
Retail

#### Webster Parish School Board

P O Box 52008  
Minden, LA 71058  
(318) 377-7052 Employment: 985  
School System

## City - Sarepta

#### Continental Structural Plastics (CSP)

26755 Highway 371  
Sarepta, LA 71071  
(318) 994-6800 Employment: 157  
Air Conditioning Components

## City - Sibley

#### C, W & W Contractors Inc

PO Box 466  
Sibley, LA 71073  
(318) 377-4823 Employment: 100  
Heavy Construction

## City - Springhill

#### International Paper/Container Division

3000 S. Arkansas Street  
Springhill, LA 71075  
(318) 994-6262 Employment: 161  
Wood Product Mfg

#### Kenyan Enterprises Inc. (Piggly Wiggly & Save-A-Lot)

501 South Main St  
Springhill, LA 71075  
(318) 539-9116 Employment: 408  
Grocery

#### Springhill Medical Center

2001 Doctors Drive  
Springhill, LA 71075  
(318) 539-1000 Employment: 232  
Health Care

#### Trane Company

P. O. Box 754  
Springhill, LA 71075  
(318) 994-3351 Employment: 260  
Air Conditioning Components

## Information by Parish

### Not Available

#### State of Louisiana - Dept. of Civil Service

P O Box 94111  
Baton Rouge, LA 70804  
(225) 342-8285 Employment: 18,873  
Government

#### C & L Shreveport, LLC (Burger King)

6800 Owensmouth Ave, Ste 380  
Canoga Park, CA 91303  
(818) 703-0767 Employment: 305  
Fast Food Restaurant

#### Pizza Hut International

14841 Dallas Pkwy  
Dallas, TX 75254  
(972) 338-7700 Employment: 301  
Fast Food Restaurant

#### RPM (Domino's) Pizza

15384 5th St  
Gulfport, MS 71112  
(800) 622-6000 Employment: 214  
Fast Food Restaurant

#### Centerpoint Energy

1111 Louisiana, CNPT 4014A  
Houston, TX 77002  
(713) 207-5548 Employment: 461  
Natural Gas

#### Express Jet, Inc. dba Continental Express Airline

700 W Sam Houston Pkwy W.  
Houston, TX 77067  
(713) 324-2639 Employment: 341  
Aircraft Repair Service

#### Wendy's Restaurants

3330 West Esplanade Ave, Ste 612  
Metairie, LA 70002  
(504) 828-1331 Employment: 252  
Fast Food Restaurant

#### U. S. Postal Service

701 Loyola Ave, Rm T2009  
New Orleans, LA 70113  
(504) 589-1186 Employment: 984  
Postal Service

#### CLECO

2030 Donahue Ferry Rd  
Pineville, LA 71360  
(318) 484-7400 Employment: 148  
Electrical Power

#### Sears Roebuck & Company - Shreveport & Bossier City

Mall St. Vincent, 3601 Southern  
Shreveport, LA 71104  
(318) 226-4110 Employment: 110  
Retail

#### Southeast Restaurant Inc, dba KFC

4200 S. Quail Creek Ave  
Springfield, MO 65810  
(417) 883-3600 Employment: 243  
Fast Food Restaurant

#### Brookshire's, Super 1 Food Stores

P O Box 1411  
Tyler, TX 75710  
(903) 534-3000 Employment: 1,220  
Grocery





1900 N. 18th St., Ste. 501, Monroe, LA 71201 | 400 Edwards St., Shreveport, LA 71101  
Monroe Office: (318) 387-0787 | Shreveport Office: (318) 677-2536  
[www.nlep.org](http://www.nlep.org) | [www.workthisway.org](http://www.workthisway.org)