

BOSSIER PARISH PROFILE-2011

AREA		MARKET ACCESSIBILITY	
Total	867 Sq. miles	Major Highways	I-20, I-49, I-220
Land	839 Sq. miles	Interstate Hwy	71, 79, 80
Water	28 Sq. miles	US Highway	2,3
		LA Highways	
DEMOGRAPHICS			
Population		Freight Railroad	
Total Population	116,979	Kansas City Southern (KCS)	
Total Households	43,657	Union Pacific Railroad (UP)	
Median Age	35.4		
Household Income		Nearest Major City	
Median Household Income	\$44,932	Shreveport, Louisiana	10 miles
Average Household Income	\$54,583		
Per Capita Income	\$21,234	Nearest Commercial Airport	
		Shreveport Regional Airport	15 miles
		(2,8300 & 2,6200 runways)	
Population by Employment		Nearest Airport	
White Collar Jobs	56.7%	Shreveport Downtown Airport	2 miles
Service Jobs	20.4%	(2,3000 runways)	
Blue Collar Jobs	22.9%		
Population by Education, 25 Years+		Nearest Port	
High School Graduate	33.5%	Port of Shreveport/Bossier(9Ft)	10 miles
Associate Degree	9.5%		
Bachelor's Degree	13.5%	Nearest Deepwater Port	
Master's Professional/Doctorate Degree	6.0%	Port of New Orleans (Deepwater)	
LABOR FORCE-YEAR 2010-Average			
Civilian Labor	54,046	MAJOR EMPLOYERS	
Employed	50,892	Barksdale Air Force Base	8,655
Unemployed	3,154	Bossier Parish School Board	2,831
Unemployment Rate	5.8%	Harrah's Horseshoe Casino & Hotel	2,000
		City of Bossier City	971
		Diamond Jack's Casino Resort	837
		Boomtown Casino	644
UNEMPLOYMENT INSURANCE CLAIMS-YEAR 2010-Average			
		CLIMATE	
TAXES, 2010		Annual average high temperature	75.4 °F
Property Taxes (Mills) Parish Wide	93.37-114.39	Annual average low temperature	50.6 °F
SALES TAX		Average temperature	63.0 °F
Parish	8.25%	Average annual precipitation	53.3 in
Bossier City	9.00%		
Benton	9.25%		
Haughton	9.25%		
Plain Dealing	9.25%		

Sources: ESRI, 2010, LA Dept of Education, LA Dept of Transportation, Parish Tax Assessor Offices, US Census 2010 Data, LA Board of Regents, LA Workforce Commission, & Hoovers

BOSSIER PARISH PROFILE-2011

Average Weekly Wages (\$) by Major Industry Division (3RD QUARTER 2010)

Industry Division	Average Weekly Wage (\$)
Bossier	\$714
Agriculture	792
Mining	1,345
Utilities	1,142
Construction	772
Manufacturing	799
Wholesale Trade	908
Retail Trade	472
Transportation & Warehousing	866
Information	742
Finance & Insurance	715
Real Estate & Rental & Leasing	629
Professional & Technical Services	857
Management Companies & Enterprises	508
Administrative & Waste Services	459
Educational Services	2,262
Healthcare & Social Assistance	682
Arts, Entertainment, and	450
Accommodation & Food Services	384
Other services, except public administration	589
Public Administration	924

Data Non-publishable

EDUCATION

Primary/Education (Year 2009-2010)

Public Schools	35
Private Schools	1
School District	1

NEAREST COMMUNITY & 2-YEAR COLLEGES

Bossier Parish Community College
Southern University-Shreveport
Northwestern University Nursing Education Center

NEAREST TECHNICAL COLLEGES

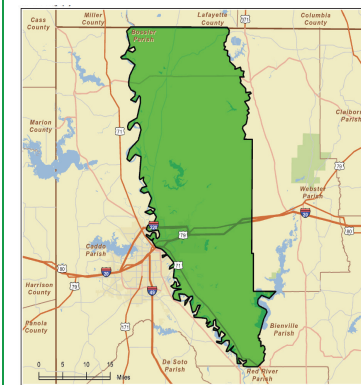
Career Technical College-Shreveport
Louisiana Technical College-Shreveport/Bossier Campus
Remington College-Shreveport

NEAREST 4 YEAR COLLEGES & UNIVERSITIES

Centenary College of Louisiana
Louisiana State University-HSC
Louisiana State University-Shreveport

ECONOMIC DEVELOPMENT CONTACT

Greater Bossier Economic Development Foundation
David Rockett
710 Benton Road
Bossier City, Louisiana 71111
Telephone: (318) 742-6043
Facsimile: (318) 742-6044
E-mail: info@gbedf.org



Sources: ESRI, 2010, LA Dept of Education, LA Dept of Transportation, Parish Tax Assessor Offices, US Census 2010 Data, LA Board of Regents, LA Workforce Commission, & Hoovers