

DESOTO PARISH PROFILE-2011

AREA		MARKET ACCESSIBILITY	
Total	894 Sq. miles	Major Highways	
Land	877 Sq. miles	Interstate Hwy	I-49
Water	17 Sq. miles	US Highway	84,171,371
		LA Highways	5
DEMOGRAPHICS			
Population		Freight Railroad	
Total Population	26,656	Kansas City Southern (KCS)	
Total Households	10,392	Union Pacific Railroad (UP)	
Median Age	38.6		
Household Income		Nearest Major City	
Median Household Income	\$30,404	Shreveport, Louisiana	45 miles
Average Household Income	\$39,350	Nearest Commercial Airport	
Per Capita Income	\$15,581	Shreveport Regional Airport	miles
		(2,8300 & 2,6200 runways)	
Population by Employment		Nearest Airport	
White Collar Jobs	44.2%	CE' RUSTY' Williams Airport	2 miles
Service Jobs	18.8%	(2,4,500 runways)	
Blue Collar Jobs	36.9%	Nearest Port	
		Port of Shreveport/Bossier(9Ft)	20 miles
Population by Education,25 Years+		Nearest Deepwater Port	
High School Graduate	44.4%	Port of New Orleans (Deepwater)	
Associate Degree	4.6%		
Bachelor's Degree	8.5%		
Master's Professional/Doctorate Degree	3.3%		
LABOR FORCE-YEAR 2010-Average			
Civilian Labor	11,570	MAJOR EMPLOYERS	
Employed	10,635	DeSoto Parish School Board	794
Unemployed	935	DeSoto Regional Health System	260
Unemployment Rate	8.1%	Dolet Hills Mining Venture	247
UNEMPLOYMENT INSURANCE CLAIMS-YEAR 2010-Average			
		CLIMATE	
		Annual average high temperature	76.5° F
		Annual average low temperature	53.0° F
		Average temperature	64.8° F
		Average annual precipitation	54.45
TAXES, 2010			
Property Taxes (Mills) Parish Wide	99.41- 116.82		
SALES TAX			
Parish	8.00%		
Logansport	9.00%		
Mansfield	9.00%		
Stonewall	9.00%		

Sources: ESRI, 2010, LA Dept of Education, LA Dept of Transportation, Parish Tax Assessor Offices, US Census 2010 Data, LA Board of Regents, LA Workforce Commission, & Hoovers

DESOTO PARISH PROFILE-2011

Average Weekly Wages (\$) by Major Industry Division (3 RD QUARTER 2010)	
DeSoto	\$780
Agriculture	706
Mining	1,293
Utilities	1,126
Construction	718
Manufacturing	1,204
Wholesale Trade	757
Retail Trade	469
Transportation & Warehousing	1,202
Information	632
Finance & Insurance	586
Real Estate & Rental & Leasing	583
Professional & Technical Services	594
Management Companies & Enterprises	1,092
Administrative & Waste Services	548
Educational Services	*
Healthcare & Social Assistance	596
Arts, Entertainment, and Recreation	362
Accommodation & Food Services	220
Other services	655
Public Administration	675

Data Non-publishable

EDUCATION	
Primary/Education (Year 2009-2010)	
Public Schools	14
Private Schools	1
School District	1

NEAREST COMMUNITY 2- YEAR COLLEGES

Bossier Parish Community College
Southern University-Shreveport
Northwestern University Nursing Education Center

NEAREST TECHNICAL COLLEGES

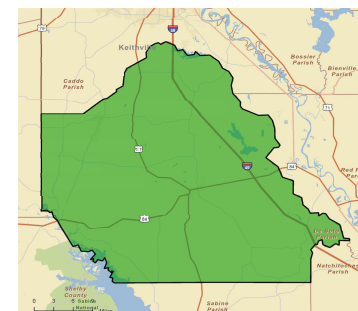
Blue Cliff College-Shreveport
Career Technical College-Shreveport
Louisiana Technical College-Shreveport-Bossier
Remington College-Shreveport

NEAREST 4- YEAR COLLEGES & UNIVERSITIES

Centenary College of Louisiana
Louisiana State University-HSC
Louisiana State University-Shreveport

ECONOMIC DEVELOPMENT CONTACT

DeSoto Parish Chamber of Commerce
Kathi Wells
115 North Washington Avenue
Mansfield, Louisiana 71052
Telephone: (318)872•1310
Facsimile: (318)871•1875
E-mail: www.desotoparishchamber.net
chamber75@bellsouth.net



Sources: ESRI, 2010, LA Dept of Education, LA Dept of Transportation, Parish Tax Assessor Offices, US Census 2010 Data, LA Board of Regents, LA Workforce Commission, & Hoovers