

# JACKSON PARISH PROFILE-2011

AREA		MARKET ACCESSIBILITY	
<b>Total</b>	580 Sq. miles	<b>Major Highways</b>	
Land	570 Sq. miles	Interstate Hwy	N/A
Water	11 Sq. miles	US Highway	167
		LA Highways	4,34
DEMOGRAPHICS			
<b>Population</b>		<b>Freight Railroad</b>	
Total Population	16,274	Kansas City Southern (KCS)	
Total Households	6,189		
Median Age	40.6	<b>Nearest Major City</b>	80 miles
		Shreveport, Louisiana	
<b>Household Income</b>		<b>Nearest Commercial Airport</b>	miles
Median Household Income	\$31,440	Shreveport Regional Airport	
Average Household Income	\$40,965	(2,8300 & 2,6200 runways)	
Per Capita Income	\$16,966		
<b>Population by Employment</b>		<b>Nearest Airport</b>	2 miles
White Collar Jobs	48.0%	Jonesboro Airport	
Service Jobs	17.2%	(1,3,203 runways)	
Blue Collar Jobs	34.8%		
<b>Population by Education, 25 Years+</b>		<b>Nearest Port</b>	20 miles
High School Graduate	43.0%	Port of Shreveport/Bossier(9Ft)	
Associate Degree	4.1%		
Bachelor's Degree	9.7%	<b>Nearest Deepwater Port</b>	
Master's Professional/Doctorate Degree	4.9%	Port of New Orleans (Deepwater)	
LABOR FORCE-YEAR 2010-Average		MAJOR EMPLOYERS	
Civilian Labor	6,673	SCC Hodge, Inc.	500
Employed	6,194	Jackson Parish School Board	378
Unemployed	479		
Unemployment Rate	7.2%	CLIMATE	
<b>UNEMPLOYMENT INSURANCE CLAIMS-YEAR 2010-Average</b>		Annual average high temperature	82.3° F
		Annual average low temperature	45.9° F
		Average temperature	78.9° F
		Average annual precipitation	58.85
TAXES, 2010			
Property Taxes (Mills) Parish Wide	91.64-101.64		
SALES TAX			
Parish	8.00%		
Eros	9.00%		
Hodge	9.00%		
Jonesboro	9.00%		

Sources: ESRI, 2010, LA Dept of Education, LA Dept of Transportation, Parish Tax Assessor Offices, US Census 2010 Data, LA Board of Regents, LA Workforce Commission, & Hoovers

# JACKSON PARISH PROFILE-2011

## Average Weekly Wages (\$) by Major Industry Division (3<sup>RD</sup> QUARTER 2010)

<b>Jackson</b>	<b>\$664</b>
Agriculture	827
Mining	1,054
Utilities	1,097
Construction	611
Manufacturing	*
Wholesale Trade	837
Retail Trade	401
Transportation & Warehousing	605
Information	463
Finance & Insurance	604
Real Estate & Rental & Leasing	410
Professional & Technical Services	484
Management Companies & Enterprises	321
Administrative & Waste Services	559
Educational Services	*
Healthcare & Social Assistance	501
Arts, Entertainment, and Recreation	433
Accommodation & Food Services	218
Other services	408
Public Administration	446

\*Data Non-publishable\*

## EDUCATION

### Primary/Education (Year 2009-2010)

Public Schools	5
Private Schools	0
School District	1

### NEAREST COMMUNITY & 2-YEAR COLLEGES

Louisiana Delta Community College

### NEAREST TECHNICAL COLLEGES

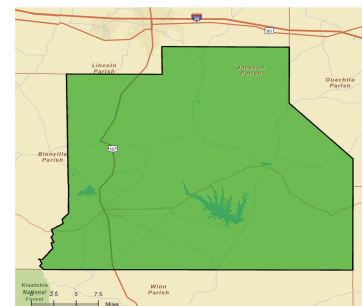
Louisiana Technical College-Delta-Ouachita Campus  
 Louisiana Technical College-Ruston Campus  
 Unitech Training Academy-West Monroe Campus

### NEAREST 4 YEAR COLLEGES & UNIVERSITIES

Grambling State University  
 Louisiana Tech University  
 University of Louisiana at Monroe

## ECONOMIC DEVELOPMENT CONTACT

Jackson Parish Chamber of Commerce  
 102 Fourth Street  
 Jonesboro, Louisiana 71251  
 Telephone: (318) 259•4693



Sources: ESRI, 2010, LA Dept of Education, LA Dept of Transportation, Parish Tax Assessor Offices, US Census 2010 Data, LA Board of Regents, LA Workforce Commission, & Hoovers