

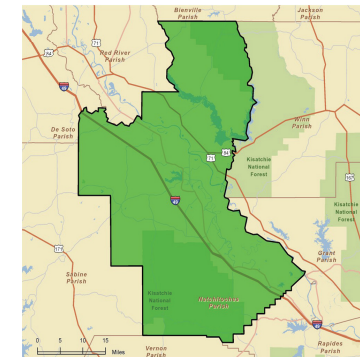
# NATCHITOCHE PARISH PROFILE-2011

AREA		MARKET ACCESSIBILITY	
<b>Total</b>	1,299 Sq. miles	<b>Major Highways</b>	
Land	1,255 Sq. miles	Interstate Hwy	I-49
Water	44 Sq. miles	US Highway	71,84
		LA Highways	1,6,9,117,119,126,153,156,1226
DEMOGRAPHICS		<b>Freight Railroad</b>	
<b>Population</b>		Union Pacific Railroad (UP)	
Total Population	39,566	Kansas City Southern (KCS)	
Total Households	15,186	<b>Nearest Major City</b>	
Median Age	31.8	Shreveport, Louisiana	77 miles
<b>Household Income</b>		<b>Nearest Commercial Airport</b>	
Median Household Income	\$28,253	Natchitoches Regional Airport	0 miles
Average Household Income	\$40,076	(2, 5000 & 4000 runways)	
Per Capita Income	\$16,001	<b>Nearest Port</b>	
<b>Population by Employment</b>		Port of Natchitoches(9Ft)	5 miles
White Collar Jobs	53.5%	<b>Nearest Deepwater Port</b>	
Service Jobs	19.0%	Port of New Orleans (Deepwater)	
Blue Collar Jobs	27.6%		
<b>Population by Education,25 Years+</b>		MAJOR EMPLOYERS	
High School Graduate	34.9%	Northwestern State University	863
Associate Degree	3.7%	Natchitoches Parish School Board	843
Bachelor's Degree	13.6%	Pilgrim's Pride-Natchitoches	702
Master's Professional/Doctorate Degree	7.2%	Roy O Martin-Plywood	692
		Alliance Compressors	600
		Natchitoches Regional Medical Center	566
		Parish of Natchitoches	206
LABOR FORCE-YEAR 2010-Average			
Civilian Labor	17,613	CLIMATE	
Employed	16,196	Annual average high temperature	76.6° F
Unemployed	1,417	Annual average low temperature	54.7° F
Unemployment Rate	8.0%	Average temperature	65.6° F
		Average annual precipitation	54.9 in
UNEMPLOYMENT INSURANCE CLAIMS-YEAR 2010-Average			
TAXES			
Property Taxes (Mills) Parish Wide	59.94-66.74		
<b>SALES TAX</b>			
Parish	7.50%		
Campti	9.50%		
Clarence	8.50%		
Natchitoches	9.00%		

Sources: ESRI, 2010, LA Dept of Education, LA Dept of Transportation, Parish Tax Assessor Offices, US Census 2010 Data, LA Board of Regents, LA Workforce Commission, & Hoovers

# NATCHITOCHE PARISH PROFILE-2011

Average Weekly Wages (\$) by Major Industry Division (3 <sup>RD</sup> QUARTER 2010)		ECONOMIC DEVELOPMENT CONTACT	
<b>Natchitoches</b>	<b>\$629</b>	City of Natchitoches Economic Development	
Agriculture	693	700 Second Street	
Mining	*	Natchitoches, Louisiana 71457	
Utilities	1,007	Telephone: (318) 238•7223	
Construction	591	Natchitoches Area Chamber of Commerce	
Manufacturing	1,024	562 2nd Street	
Wholesale Trade	755	Natchitoches, Louisiana 71457	
Retail Trade	404	Telephone: (318) 352•6894	
Transportation & Warehousing	821	Facsimile: (318) 352•5385	
Information	706	E-mail: chamber@natchitoches.net	
Finance & Insurance	730		
Real Estate & Rental & Leasing	370		
Professional & Technical Services	692		
Management Companies & Enterprises	749		
Administrative & Waste Services	529		
Educational Services	850		
Healthcare & Social Assistance	559		
Arts, Entertainment, and Recreation	327		
Accommodation & Food Services	242		
Other services	507		
Public Administration	674		
<b>*Data Non-publishable*</b>			
EDUCATION			
Primary/Education (Year 2009-2010)			
Public Schools	16		
Private Schools	1		
School District	1		
NEAREST COMMUNITY &2- YEAR COLLEGES			
Bossier Parish Community College			
NEAREST TECHNICAL COLLEGES			
Louisiana Technical College-Natchitoches Campus			
NEAREST 4 YEAR COLLEGES & UNIVERSITIES			
Northwestern State University of Louisiana			



Sources: ESRI, 2010, LA Dept of Education, LA Dept of Transportation, Parish Tax Assessor Offices, US Census 2010 Data, LA Board of Regents, LA Workforce Commission, & Hoovers