

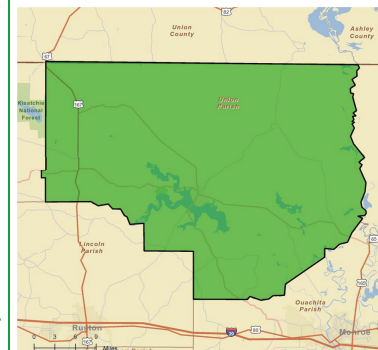
# UNION PARISH PROFILE-2011

AREA		MARKET ACCESSIBILITY	
<b>Total</b>	905 Sq. miles	<b>Major Highways</b>	
Land	878 Sq. miles	Interstate Hwy	I-20(12 miles south of parish)
Water	28 Sq. miles	US Highway	63,167
		LA Highways	2,15,33
<b>DEMOGRAPHICS</b>		<b>Freight Railroad</b>	
<b>Population</b>		Union Pacific Railroad (UP)	
Total Population	22,721		
Total Households	9,091	<b>Nearest Major City</b>	90 miles
Median Age	39.9	Shreveport, Louisiana	
<b>Household Income</b>		<b>Nearest Commercial Airport</b>	30 miles
Median Household Income	\$31,662	Monroe Regional Airport	
Average Household Income	\$41,280	(2, 5000 & 1, 7500 runway)	
Per Capita Income	\$16,851	<b>NEAREST AIRPORT</b>	
<b>Population by Employment</b>		Farmerville Airport	
White Collar Jobs	48.2%	(1, 3000 runway)	
Service Jobs	15.3%	<b>Nearest Port</b>	25 miles
Blue Collar Jobs	36.5%	Greater Ouachita Parish Port(9Ft)	
<b>Population by Education,25 Years+</b>		<b>Nearest Deepwater Port</b>	
High School Graduate	43.7%	Port of New Orleans (Deepwater)	
Associate Degree	3.6%		
Bachelor's Degree	9.7%	<b>MAJOR EMPLOYERS</b>	
Master's Professional/Doctorate Degree	3.8%	Foster Farms	950
<b>LABOR FORCE-YEAR 2010-Average</b>		Union Parish School Board	450
Civilian Labor	10,212	Union General Hospital	125
Employed	9,341	Century Link	55
Unemployed	871	<b>CLIMATE</b>	
Unemployment Rate	8.5%	Annual average high temperature	55.0°F
<b>UNEMPLOYMENT INSURANCE CLAIMS-YEAR 2010-Average</b>		Annual average low temperature	32.0°F
		Average temperature	44.0°F
		Average annual precipitation	51.2in
<b>TAXES</b>			
Property Taxes (Mills) Parish Wide	59.20-64.09		
<b>SALES TAX</b>			
Parish	8.00%		
Bernice	10.00%		
Farmerville	9.50%		
Marion	9.00%		

Sources: ESRI, 2010, LA Dept of Education, LA Dept of Transportation, Parish Tax Assessor Offices, US Census 2010 Data, LA Board of Regents, LA Workforce Commission, & Hoovers

# UNION PARISH PROFILE-2011

Average Weekly Wages (\$) by Major Industry Division (3 <sup>RD</sup> QUARTER 2010)	ECONOMIC DEVELOPMENT CONTACT
<b>Union</b>	<b>\$525</b>
Agriculture	655
Mining	754
Utilities	759
Construction	553
Manufacturing	*
Wholesale Trade	727
Retail Trade	413
Transportation & Warehousing	639
Information	987
Finance & Insurance	710
Real Estate & Rental & Leasing	421
Professional & Technical Services	504
Management Companies & Enterprises	0
Administrative & Waste Services	574
Educational Services	*
Healthcare & Social Assistance	529
Arts, Entertainment, and Recreation	391
Accommodation & Food Services	208
Other services	470
Public Administration	668
<b>*Data Non-publishable*</b>	
<b>EDUCATION</b>	
<b>Primary/Education (Year 2009-2010)</b>	
Public Schools	8
Private Schools	1
School District	1
<b>NEAREST COMMUNITY &amp; 2-YEAR COLLEGES</b>	
Louisiana Delta Community College	
<b>NEAREST TECHNICAL COLLEGES</b>	
Louisiana Technical College-North Central Campus	
<b>NEAREST 4 YEAR COLLEGES &amp; UNIVERSITIES</b>	
Grambling State University	
Louisiana Tech University	
University of Louisiana at Monroe	



Sources: ESRI, 2010, LA Dept of Education, LA Dept of Transportation, Parish Tax Assessor Offices, US Census 2010 Data, LA Board of Regents, LA Workforce Commission, & Hoovers